

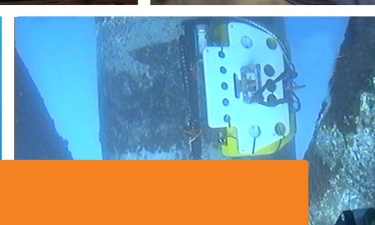
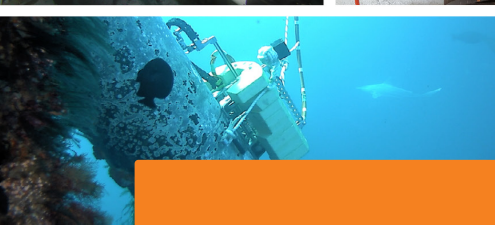
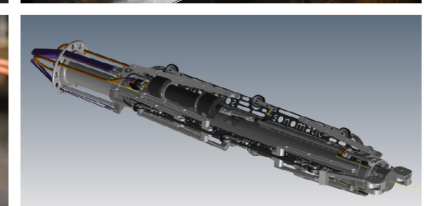
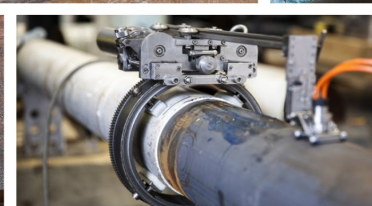
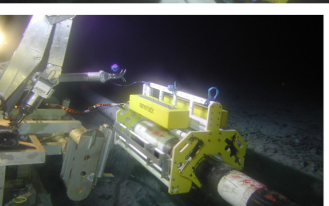
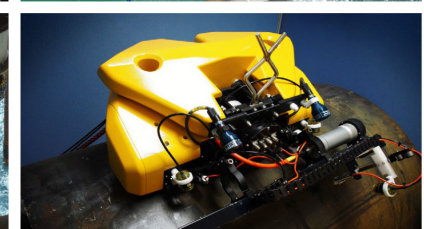
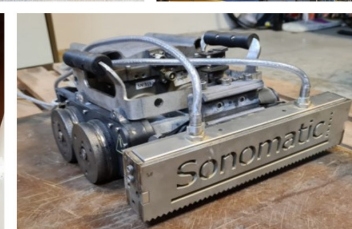
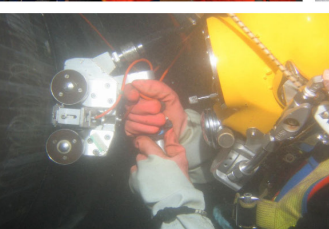
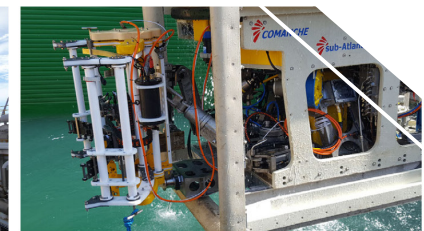
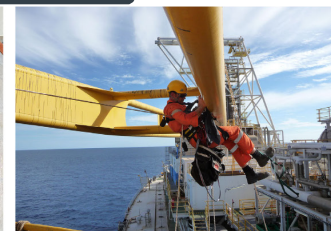
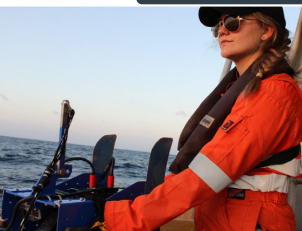
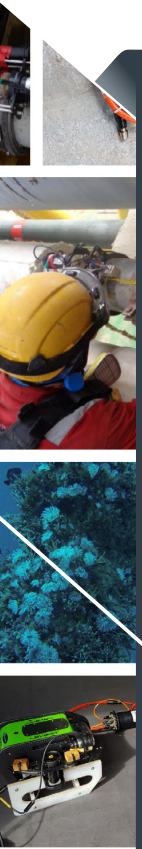


DATA SHEET

PIPELINE INTEGRITY SERVICES

THE PURPOSE

This document is composed to assist our clients and the supply with a high-level understanding of the benefits, services and specialist packages associated with our Pipeline Integrity Services.



PIPELINE INTEGRITY SERVICES

Pipelines are key assets for operator companies and their continued integrity underlies successful business performance. They are essential to production and failures or unplanned downtime can have a major impact on company revenues. Pipeline failures can also have severe safety and/or environmental consequences. Operator companies therefore place significant emphasis on assuring the integrity of pipelines. An understanding of the current and likely future condition of pipelines is central to effective integrity decision making. Sonomatic assists operators by providing a range of pipeline integrity services including innovative statistical analysis methods that ensure decision making is aligned to the real condition of pipelines.

OUR PIPELINE INTEGRITY SERVICES COVER THE FOLLOWING:

1.

Analysis of ILI data. This covers statistical analysis of ILI data for measurement error analysis, defect depth characterisation and more realistic and accurate corrosion growth rate distributions.
2.

External automated ultrasonic verification of ILI measurements. The inspection services can be provided subsea by diver or ROV deployed tools.
3.

Integrity assessment based on ILI and external inspection data. Fitness for purpose assessments to B31G, RSTRENG, modified RSTRENG, DNV-RP-F101 and, where applicable for pipelines, to API 579. Probabilistic integrity and remaining life assessments are based on statistical analysis of the ILI data.
4.

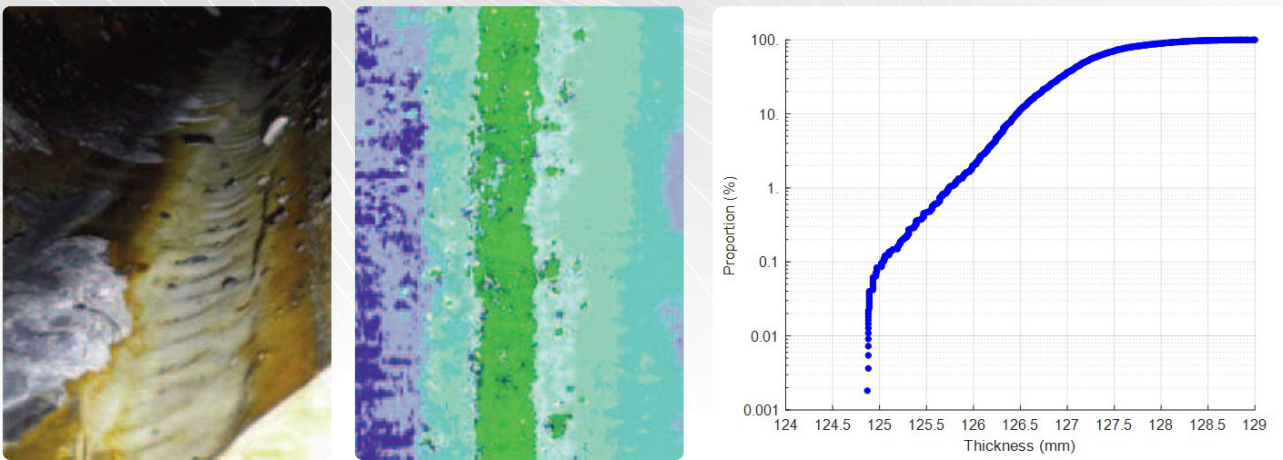
'Re-calibration' of MFL ILI datasets based on limited external inspection based on refined statistical error analysis.
5.

Statistical analysis of limited coverage inspections making estimates of the condition of uninspected material based on either external UT or internal ILI data.
6.

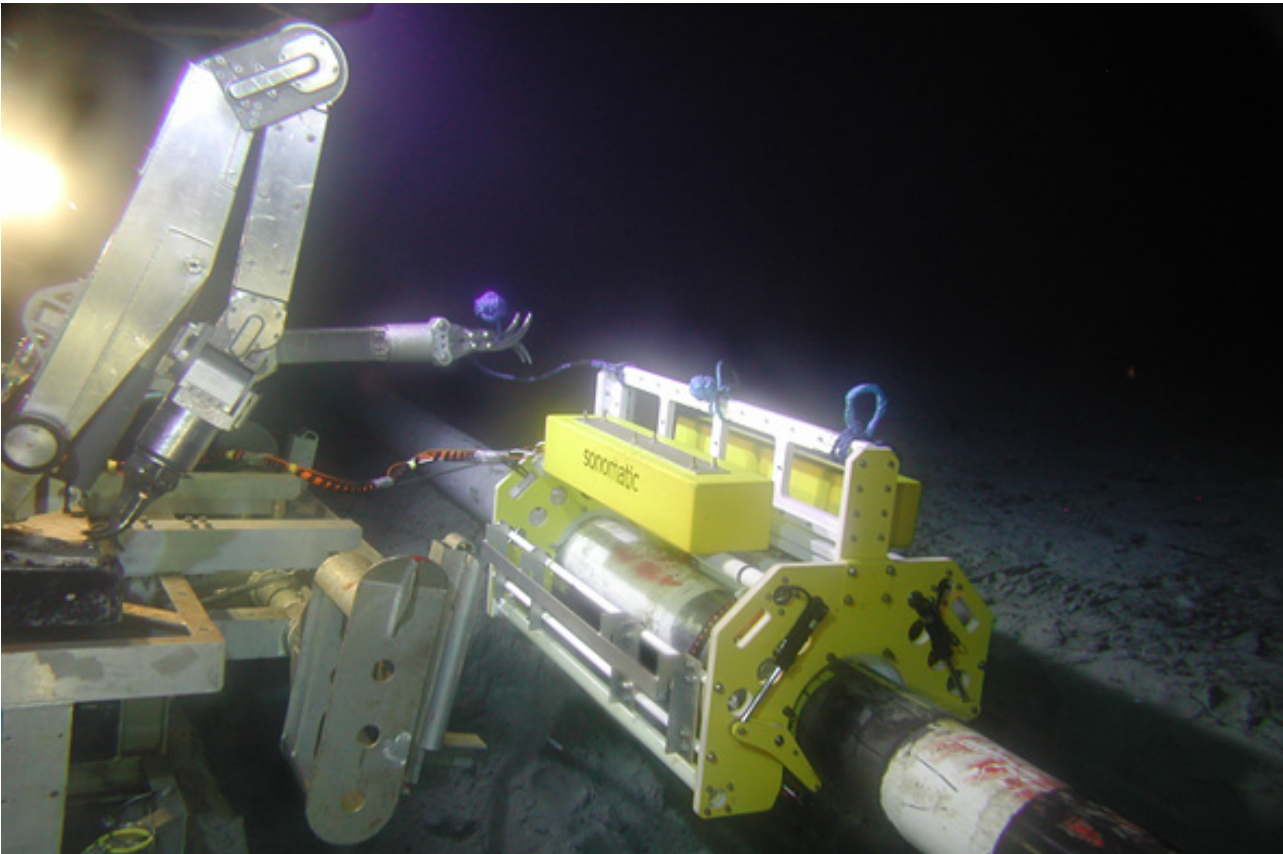
Sonomatic uses a range of statistical techniques to improve the reliability of corrosion growth estimates by detailed analysis of the effects of measurement error on either external UT or internal ILI data.
7.

Identification of inspection requirements for piggable lines. This includes pipeline corrosion risk assessment and integrity/remaining life assessment to identify the detection and sizing requirements.
8.

Identification of inspection requirements for unpiggable lines. This makes use of corrosion risk assessments and statistical analysis methods to determine the inspection locations, coverage, accuracy and sensitivity requirements.



Sonomatic is the leading provider of statistical analysis in support of integrity management for upstream oil and gas producers and has developed a range of innovative methods for analysis of corrosion and inspection data. These methods offer a significantly more representative view on pipeline condition and remaining life, compared to traditional methods of data analysis and application of inspection data in pipeline integrity assessments. Application of Sonomatic's analysis methods leads to major benefits to pipeline operators through, for example, justification of extended operation or more reliable identification of threats to pipeline integrity.



QA AND HS&E

Sonomatic operate under an integrated QHSE management system and are committed to the highest quality and safety of service provision | ISO 9001: 2015: 00007140 | ISO 14001:2015:00037371 | ISO 45001:2018:00037372 | ISO 17020: 2012: 4276 | Achilles FPAL Verified: 076712 | SEQual 1988 | British Safety Council Member: S0388440 |



CONTACTS

EUROPE AND AFRICA

Graham Marshall

Subsea Project Manager

T: +44 (0) 1224 823 960

E: Graham.Marshall@sonomatic.com

Stuart Ley

Topside Project Manager

T: +44 (0) 1224 823 960

E: Stuart.Ley@sonomatic.com

Danielle Gunns

Project Delivery Manager (Warrington)

T: +44 (0) 1925 414 000

E: Danielle.Gunns@sonomatic.com

John Lilley

Senior Technical Consultant

T: +44 (0) 1925 414 000

E: John.Lilley@sonomatic.com

AUSTRALASIA

Jonathan Millen

Australia West Coast Project Manager

T: +61 415 850 346

E: Jon.Millen@sonomatic.com.au

Judd McCann

Australia East Coast Project Manager

T: +61 488 442 019

E: Judd.McCann@sonomatic.com.au

Zach McCann

South East Asia Regional Manager

T: +61 404 797 670

E: Zach.McCann@sonomatic.com.au

Alex Cesan

Australia & South East Asia General Manager

T: +61 498 442 666

E: Alex.Cesan@sonomatic.com.au

AMERICAS

Esteban Cesan

General Manager Americas

T: +1 832 977 0303

E: Esteban.Cesan@sonomatic.com

MIDDLE EAST

Gordon Reid

Regional Manager

T: +971 26 580 708

E: Gordon.Reid@sonomatic.com



www.sonomatic.com



www.cwl.group