



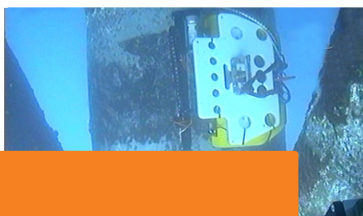
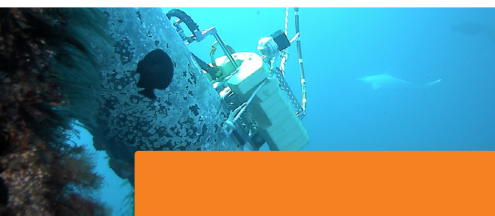
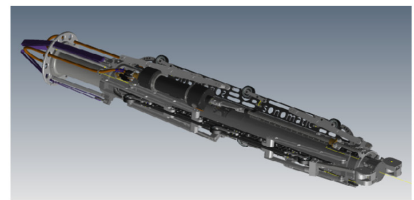
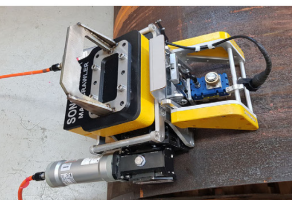
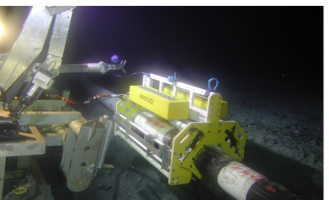
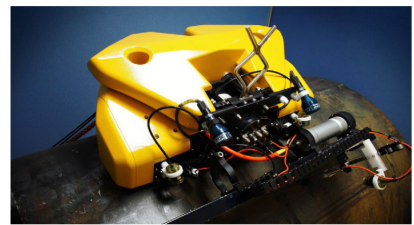
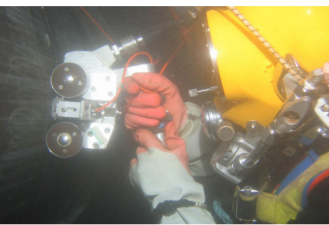
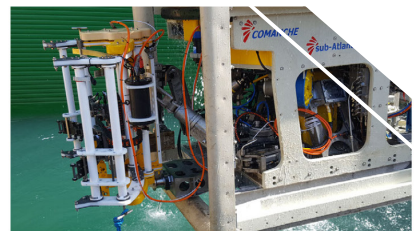
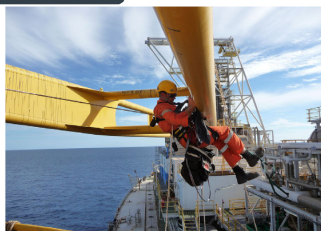
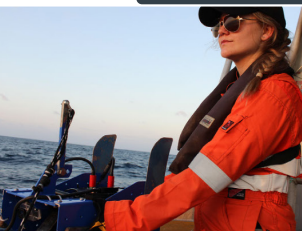
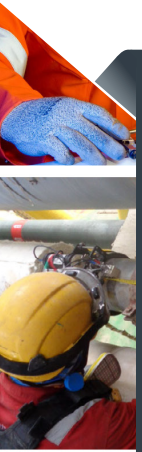
# SONOMATIC

## DATA SHEET

### SUBSEA & TOPSIDE INSPECTION - STINGRAY

#### THE PURPOSE

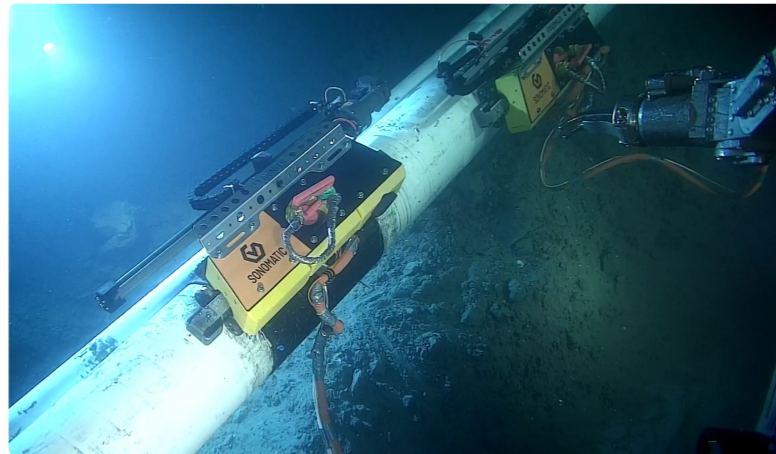
This document is composed to assist our clients and the supply chain with a high-level understanding of the benefits and services associated with our Stingray system.



# STINGRAY

Introducing the new Stingray automated scanner from Sonomatic.

Designed on a new fully customisable modular chassis, the Stingray automated scanner has been designed taking learnings from years of experience and skill in the design and development of automated inspection systems. As a world leader in this field, Sonomatic's Stingray is customisable and adaptable to many complex inspection tasks. From basic pipework to complex Non-Intrusive Inspection (NII) of pressure vessels, inspection of caissons in both topside and subsea applications through the splash zone.



Reduction in size and weight against competitive alternatives, Stingray offers benefits in operation and manual handling. The ability to be deployed by smaller inspection class ROV's either from the asset or a vessel, and delivering advance inspection technologies such as DRS, enables the Stingray to a very competitive option for clients.

For use in Topside applications, Stingray is easier to handle and manoeuvre when in use and setting up, is faster than industry norm for data collection.

## HOW IT WORKS

Sonomatic's Stingray has been specifically designed for Subsea (deep-water and Topside) ultrasonic inspections and can be uniquely steered under remote control to the work site. The tool is ideally suited for use in areas where the risk to human life is not acceptable, or depths beyond saturation diver limits.

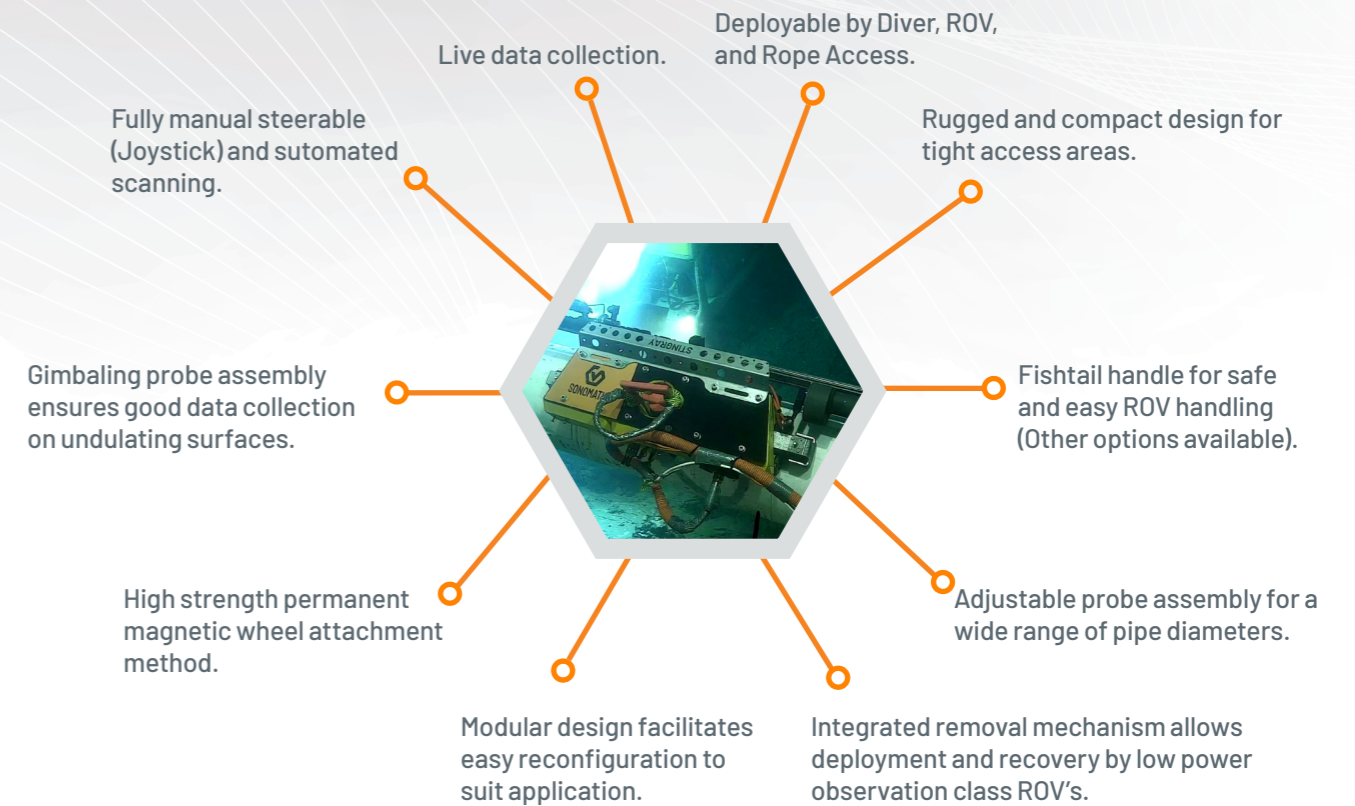


When deployed via an ROV, the Stingray harnesses its power supply and data communication feeds from the host, making it a very versatile system. The scanner has a short umbilical, enabling deployment in a number of challenging locations, such as inside a jacket structure to conduct structural weld inspections.



When mobilised, 100% redundancy of kit is supplied (2x operational Stingray scanners), in a self-contained workshop container fitted to the vessel back deck. The system is launched/recovered over the side of the vessel/through a moonpool secured in the ROV manipulator.

## KEY FEATURES



The Stingray can be used for the following applications:

- Inspection in areas of restricted access on pipelines, structures, and subsea oil storage tanks.
- Inspection of jacket closure welds, caissons, conductors.
- Inspection on semi-submersible structures and hulls.
- Non-Intrusive Inspection of Pressure Vessels/Pipework/Storage Tanks

A range of inspection types can be carried out, including:

- Time of Flight Diffraction (TOFD)
- Zero Degree
- Phased Array
- Angle Shear Wave
- Dynamic Response Spectroscopy (DRS)
- Marine Growth Removal



## QA AND HS&E

Sonomatic operate under an integrated QHSE management system and are committed to the highest quality and safety of service provision | ISO 9001: 2015: 00007140 | ISO 14001:2015:00037371 | ISO 45001:2018:00037372 | ISO 17020: 2012: 4276 | Achilles FPAL Verified: 076712 | SEQual 1988 | British Safety Council Member: S0388440 |



# CONTACTS

## EUROPE AND AFRICA

### Graham Marshall

Subsea Project Manager

T: +44(0)1224 823 960

E: Graham.Marshall@sonomatic.com

### Stuart Ley

Topside Project Manager

T: +44(0)1224 823 960

E: Stuart.Ley@sonomatic.com

### Danielle Gunns

Project Delivery Manager (Warrington)

T: +44(0) 1925 414 000

E: Danielle.Gunns@sonomatic.com

### John Lilley

Senior Technical Consultant

T: +44(0)1925 414 000

E: John.Lilley@sonomatic.com

## AUSTRALASIA

### Jonathan Millen

Australia West Coast Project Manager

T: +61 415 850 346

E: Jon.Millen@sonomatic.com.au

### Judd McCann

Australia East Coast Project Manager

T: +61 488 442 019

E: Judd.McCann@sonomatic.com.au

### Zach McCann

South East Asia Regional Manager

T: +61 404 797 670

E: Zach.McCann@sonomatic.com.my

### Alex Cesan

Australia & South East Asia General Manager

T: +61 498 442 666

E: Alex.Cesan@sonomatic.com.au

## AMERICAS

### Esteban Cesan

General Manager Americas

T: +1 832 977 0303

E: Esteban.Cesan@sonomatic.com

## MIDDLE EAST

### Gordon Reid

Regional Manager

T: +971 26 580 708

E: Gordon.Reid@sonomatic.com



www.sonomatic.com



www.cwl.group