

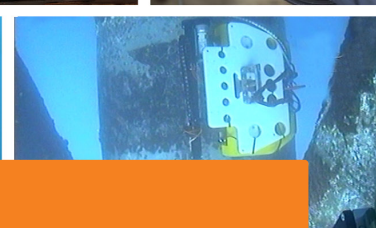
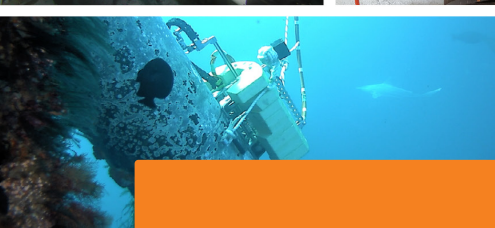
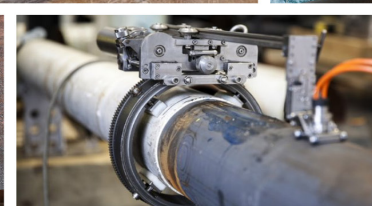
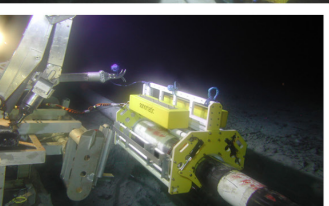
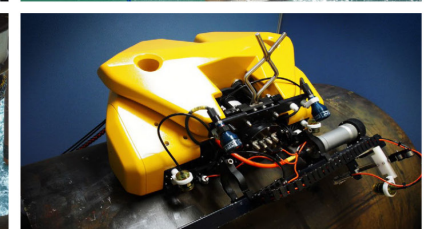
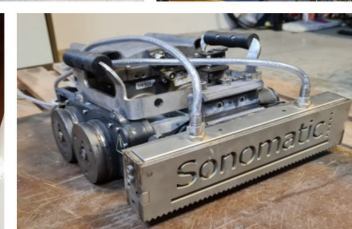
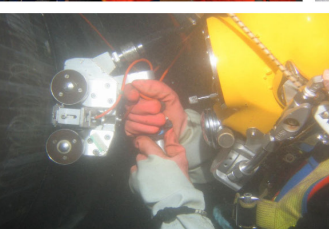
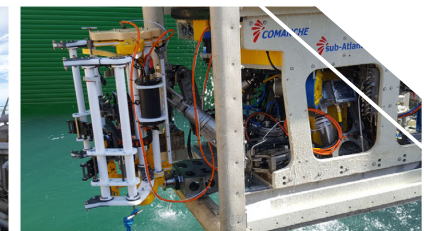
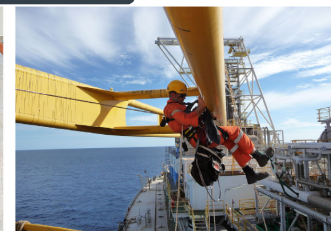
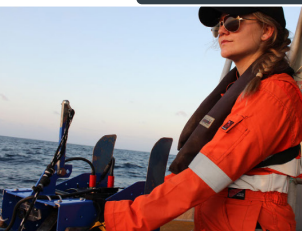
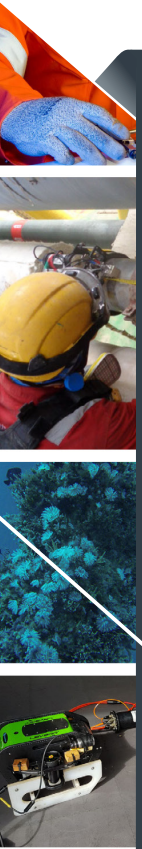


DATA SHEET

RAPTOR II

THE PURPOSE

This document is composed to assist our clients and the supply chain with a high-level understanding of the benefits and services associated with our Raptor II.



RAPTOR II

The Raptor II is a significant update to Sonomatic's field proven Raptor automated ultrasonic scanner. It retains the industry leading ultrasonic performance and includes a range of improvements in mechanical performance. These provide increased scanning speeds and faster, more straightforward deployment on site. As with the original scanner the main application of Raptor II is for rapid corrosion mapping of large areas, as would typically be a requirement in Non-Intrusive Inspection (NII) of pressure vessels and for storage tank wall inspection.

KEY FEATURES

Accurate ultrasonic corrosion mapping with industry leading performance as validated by the HOIS Joint Industry Project.

Ability to deploy 0 degree corrosion mapping, TOFD, Multiskip and CHIME.

Rapid coverage inspections, suitable for vessel NII and tank wall inspection.

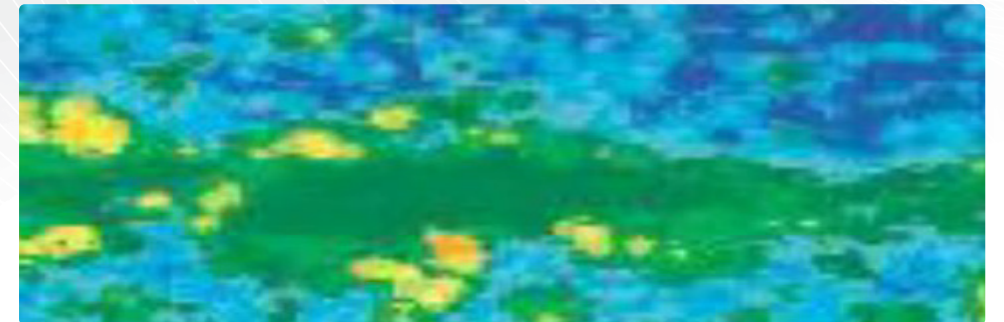
Integrates with Sonomatic's Microplue ultrasonic systems.

Real time imaging and review of data during inspection.

Up to 16 channels of ultrasonic data, with storage of full waveforms for subsequent processing.

Data suitable for statistical analysis, e.g. in support of sample inspection approaches.

Corrosion mapping and TOFD screening data used to automatically produce composite corrosion maps.



Data suitable for Fitness for Service Assessments including Level 3 assessment based on finite element analysis.

Immersion probe for water gap inspection.

Capability to drive axially and circumferentially on vessels, piping and tanks, even to small diameters.

Steerable during the inspection.

Cross arm widths (defining corrosion mapping coverage) between 500mm and 1200mm.

Light weight for ease of deployment.

Strong magnetic wheels, allowing travel on vertical and uneven surfaces.

Ability to operate with an umbilical length of 25m with water supply to a height of 20m.

QA AND HS&E

Sonomatic operate under an integrated QHSE management system and are committed to the highest quality and safety of service provision | ISO 9001: 2015: 00007140 | ISO 14001:2015:00037371 | ISO 45001:2018:00037372 | ISO 17020: 2012: 4276 | Achilles FPAL Verified: 076712 | SEQual 1988 | British Safety Council Member: S0388440 |



CONTACTS

EUROPE AND AFRICA

Graham Marshall

Subsea Project Manager

T: +44 (0) 1224 823 960

E: Graham.Marshall@sonomatic.com

Stuart Ley

Topside Project Manager

T: +44 (0) 1224 823 960

E: Stuart.Ley@sonomatic.com

Danielle Gunns

Project Delivery Manager (Warrington)

T: +44 (0) 1925 414 000

E: Danielle.Gunns@sonomatic.com

John Lilley

Senior Technical Consultant

T: +44 (0) 1925 414 000

E: John.Lilley@sonomatic.com

AUSTRALASIA

Jonathan Millen

Australia West Coast Project Manager

T: +61 415 850 346

E: Jon.Millen@sonomatic.com.au

Judd McCann

Australia East Coast Project Manager

T: +61 488 442 019

E: Judd.McCann@sonomatic.com.au

Zach McCann

South East Asia Regional Manager

T: +61 404 797 670

E: Zach.McCann@sonomatic.com.my

Alex Cesan

Australia & South East Asia General Manager

T: +61 488 442 666

E: Alex.Cesan@sonomatic.com.au

AMERICAS

Esteban Cesan

General Manager Americas

T: +1 832 977 0303

E: Esteban.Cesan@sonomatic.com

MIDDLE EAST

Gordon Reid

Regional Manager

T: +971 26 580 708

E: Gordon.Reid@sonomatic.com



www.sonomatic.com



www.cwl.group