



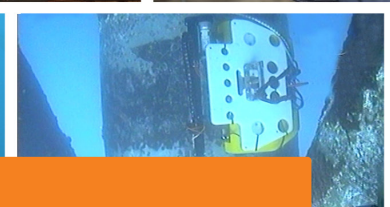
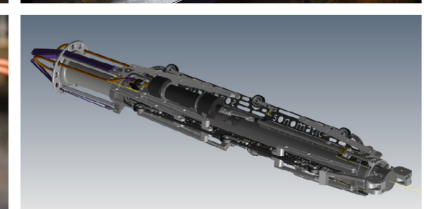
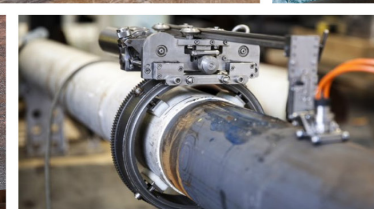
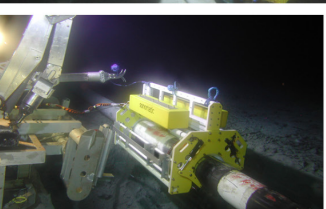
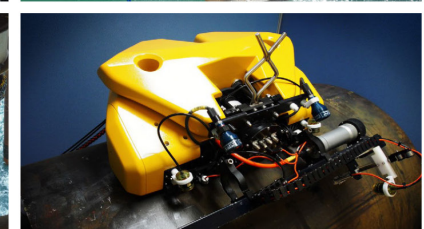
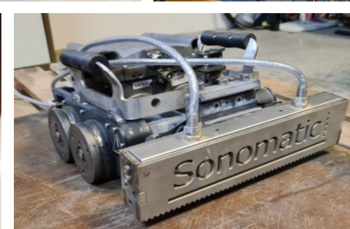
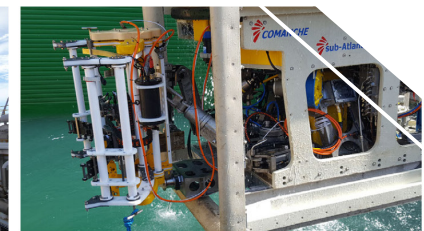
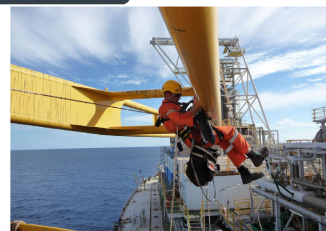
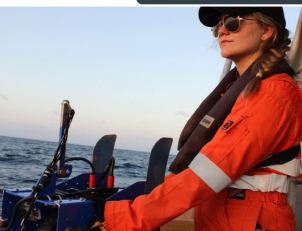
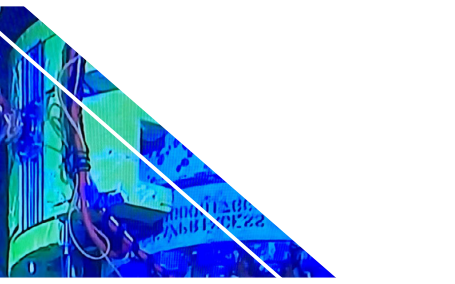
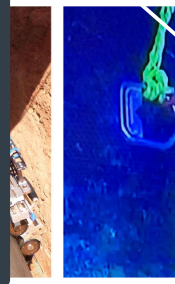
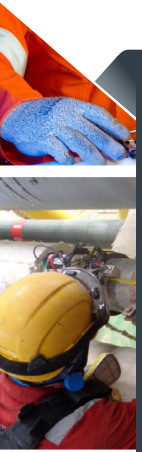
# SONOMATIC

## DATA SHEET

### END DOME ROBOTIC INSPECTION SYSTEM (EDRIS)

#### THE PURPOSE

This document is composed to assist our clients and the supply chain with a high-level understanding of the benefits and services associated with our End Dome Robotic Inspection System (EDRIS).

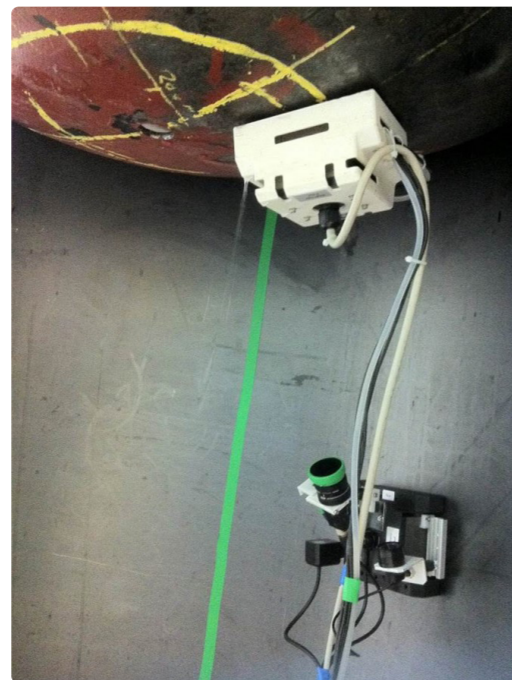


# EDRIS

Sonomatic have developed an End Dome Robotic Inspection System (EDRIS). This miniature scanner has a deployment system which eliminates the requirements for manned entry. The deployment tool carrying the scanner is attached to the skirt allowing for the deployment of the scanner to the domed end. Video tracked corrosion mapping inspection technique is currently fitted to the scanner, alternative attachments and inspection tooling are being developed and engineered, and through continuous collaboration with our clients, refined.

## THE ISSUE

Effective NII of vertical pressure vessels typically includes inspection of the bottom head. The pressure vessel's bottom domed end is usually the main area at risk of corrosion due to fluids knocking out of gas trains due to differential pressure. These locations are commonly difficult to inspect because of the skirt being welded to the tangent line of the head creating an inaccessible area for inspection or requiring confined space entry to inspect. Sonomatic has addressed this issue by development of the EDRIS Scanner which ensures inspection, meeting the Non-Intrusive Inspection (NII) requirements for vertical pressure vessels.



## FEATURES

EDRIS safety benefits are the reduced risk of confined space entry, historically personnel would be required to enter the confined space with conventional NDT methods to complete the intrusive inspection requirements.

## BENEFITS

- 🛡️ Exceptionally small size and profile to maximise coverage for remote automated scanning.
- 🛡️ Data suitable for use in statistical analysis as part of NII justification.
- 🛡️ Remote inspection for areas of restricted access.
- 🛡️ Fully steerable plus ability to turn on own axis.

## QA AND HS&E

Sonomatic operate under an integrated QHSE management system and are committed to the highest quality and safety of service provision | ISO 9001: 2015: 00007140 | ISO 14001:2015:00037371 | ISO 45001:2018:00037372 | ISO 17020: 2012: 4276 | Achilles FPAL Verified: 076712 | SEQual 1988 | British Safety Council Member: S0388440 |



# CONTACTS

## WORLDWIDE

**John Lilley**  
Senior Technical Consultant  
T: +44 (0) 1925 414 000  
E: John.Lilley@sonomatic.com

## EUROPE AND AFRICA

**Graham Marshall**  
Subsea Project Manager  
T: +44 (0) 1224 823 960  
E: Graham.Marshall@sonomatic.com

**Stuart Ley**  
Topside Project Manager  
T: +44 (0) 1224 823 960  
E: Stuart.Ley@sonomatic.com

**Danielle Gunns**  
Project Delivery Manager (Warrington)  
T: +44 (0) 1925 414 000  
E: Danielle.Gunns@sonomatic.com

## AUSTRALASIA

**Jonathan Millen**  
Australia West Coast Project Manager  
T: +61 415 850 346  
E: Jon.Millen@sonomatic.com.au

**Judd McCann**  
Australia East Coast Project Manager  
T: +61 488 442 019  
E: Judd.McCann@sonomatic.com.au

**Zach McCann**  
South East Asia Regional Manager  
T: +61 404 797 670  
E: Zach.McCann@sonomatic.com.my

**Alex Cesan**  
Australia & South East Asia General Manager  
T: +61 498 442 666  
E: Alex.Cesan@sonomatic.com.au

## MIDDLE EAST

**Gordon Reid**  
Regional Manager  
T: +971 26 580 708  
E: Gordon.Reid@sonomatic.com

## AMERICAS

**Esteban Cesan**  
General Manager Americas  
T: +1 832 977 0303  
E: Esteban.Cesan@sonomatic.com