

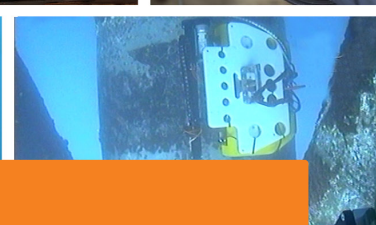
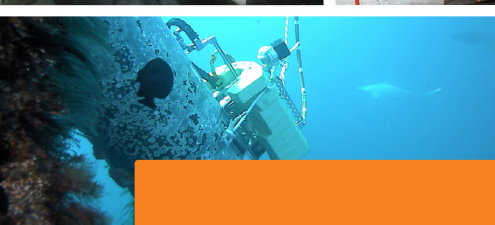
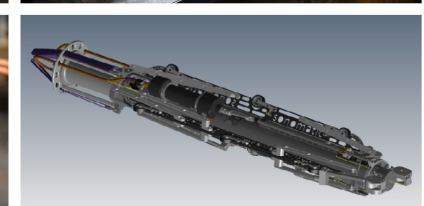
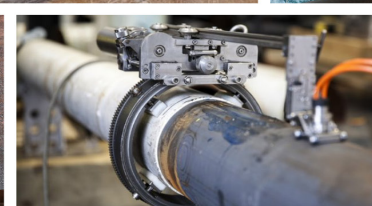
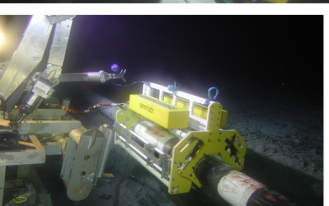
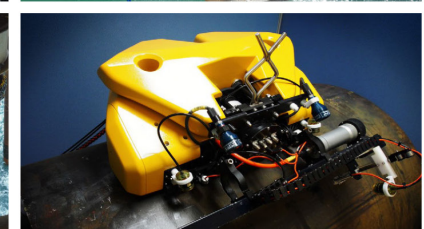
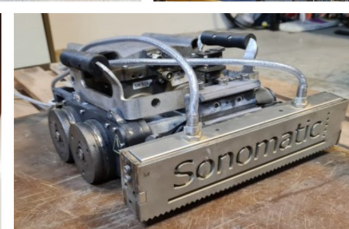
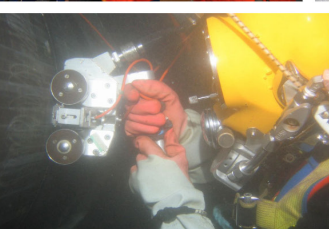
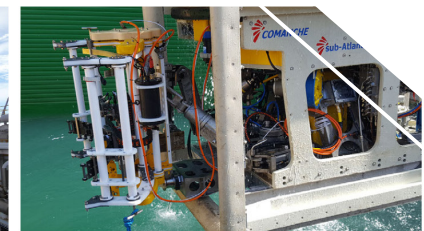
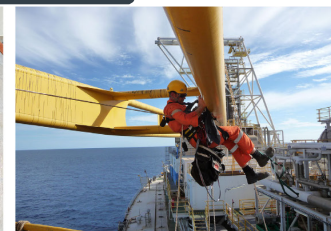
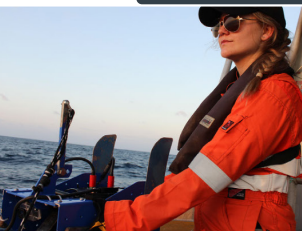
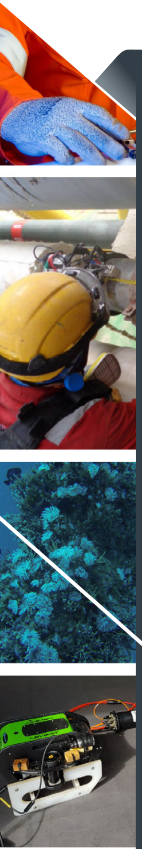


DATA SHEET

SUBSEA INSPECTION - ROV-IT

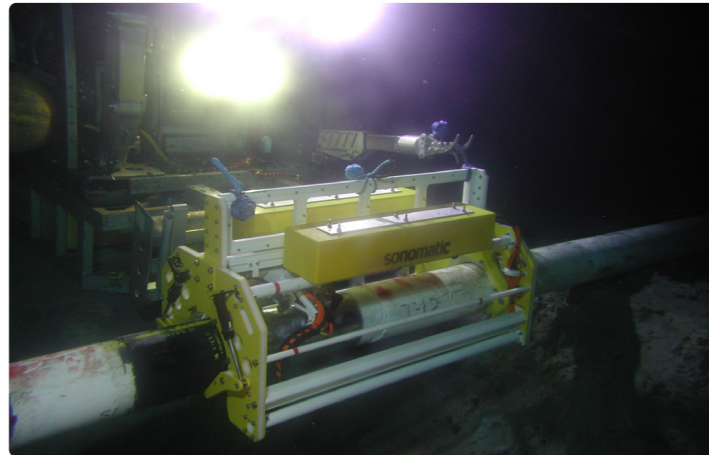
THE PURPOSE

This document is composed to assist our clients and the supply chain with a high-level understanding of the benefits and services associated with our ROV-IT system.



SUBSEA INSPECTION - ROV-IT

Sonomatic – the world's leading provider of automated ultrasonic subsea inspection for more than 30 years – has developed a range of ROV-deployed tools that offer significant advantages over traditional diver-deployed systems. Among the key benefits, is the ability to carry out inspection work without the need for a dive support vessel, and at much greater depths.



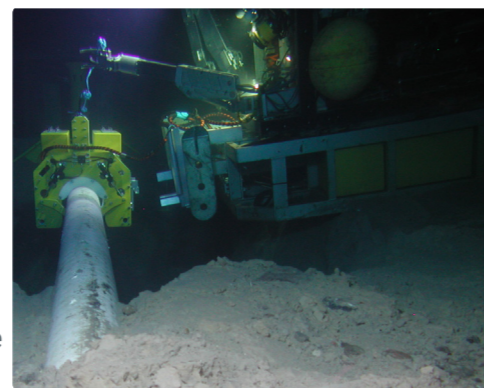
Sonomatic has strategically-placed offices which allow us to respond to clients globally and supply a range of quality products backed by outstanding customer service. As well as providing field services, we also offer training and consultancy at our UK bases and at clients' premises anywhere in the world.

Our commitment is to enhancing asset performance through applied, innovative technology, and delivering these benefits to our customers through our products and services. We are also committed to working with our customers as value-added partners to fully maximise the benefits of inspection technology.

ROV TOOLS AND INSPECTION TECHNIQUES

Sonomatic's ROV-deployable ROV-IT tools have been designed for inspecting the parent material and welds on pipelines, risers, caissons, and structural assets. The tools are adaptable, operating on both horizontal and vertical pipes ranging from 6" to 30" diameter. A range of inspection techniques can be deployed, including:

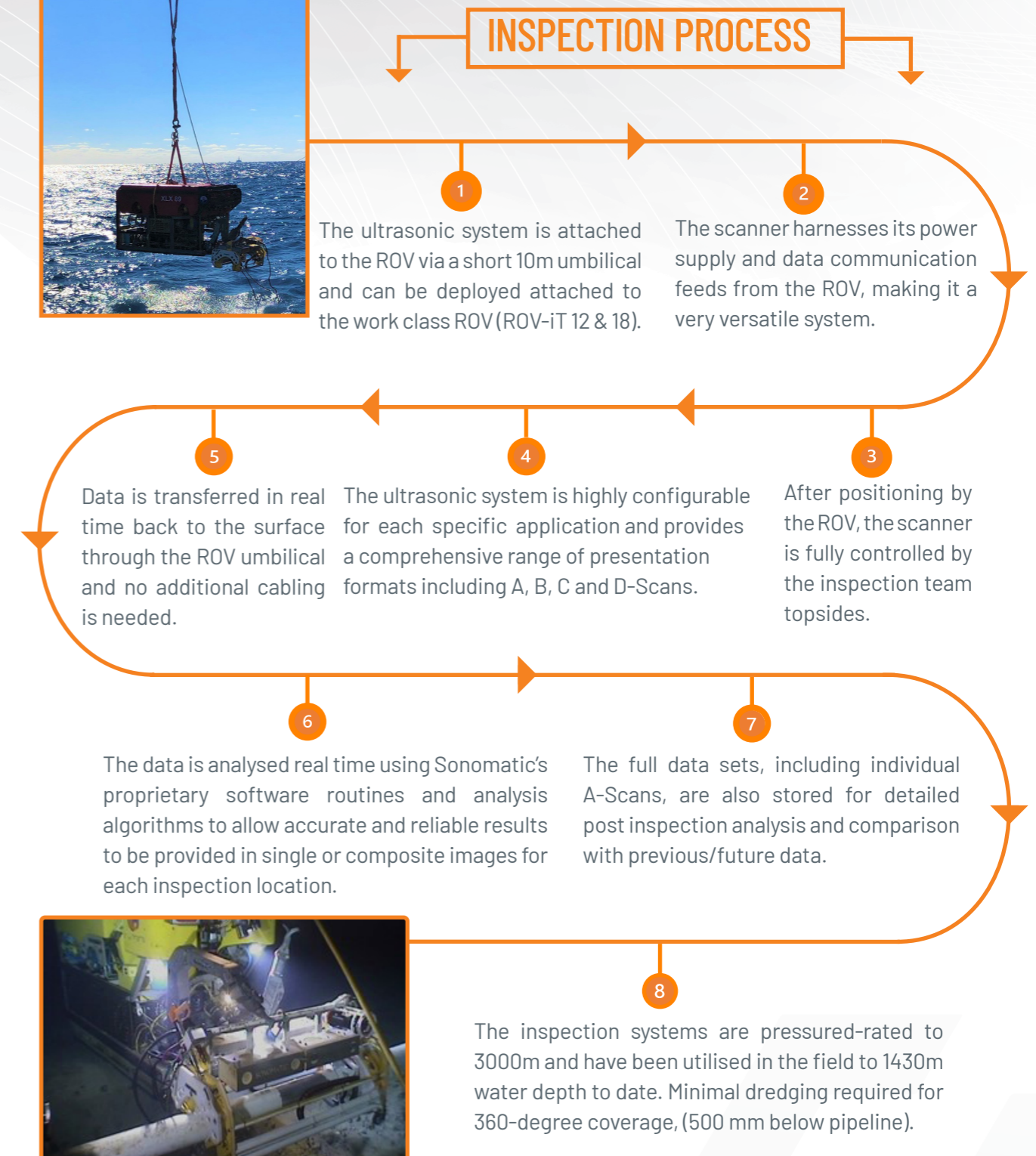
- ✦ Corrosion Mapping
- ✦ Time of Flight Diffraction (TOFD)
- ✦ Automated Shear Wave Pulse Echo/Phased Array/TFM
- ✦ Computed Tomography
- ✦ Dynamic Response Spectroscopy (DRS)
- ✦ The scanner can also be utilised for component profile measurement and Alternating Current Field Measurements.



The tools are built around Sonomatic's extensive field experience with challenging subsea inspections and integrate our proven Microplus ultrasonic systems and software with bespoke in-house designed scanner hardware.

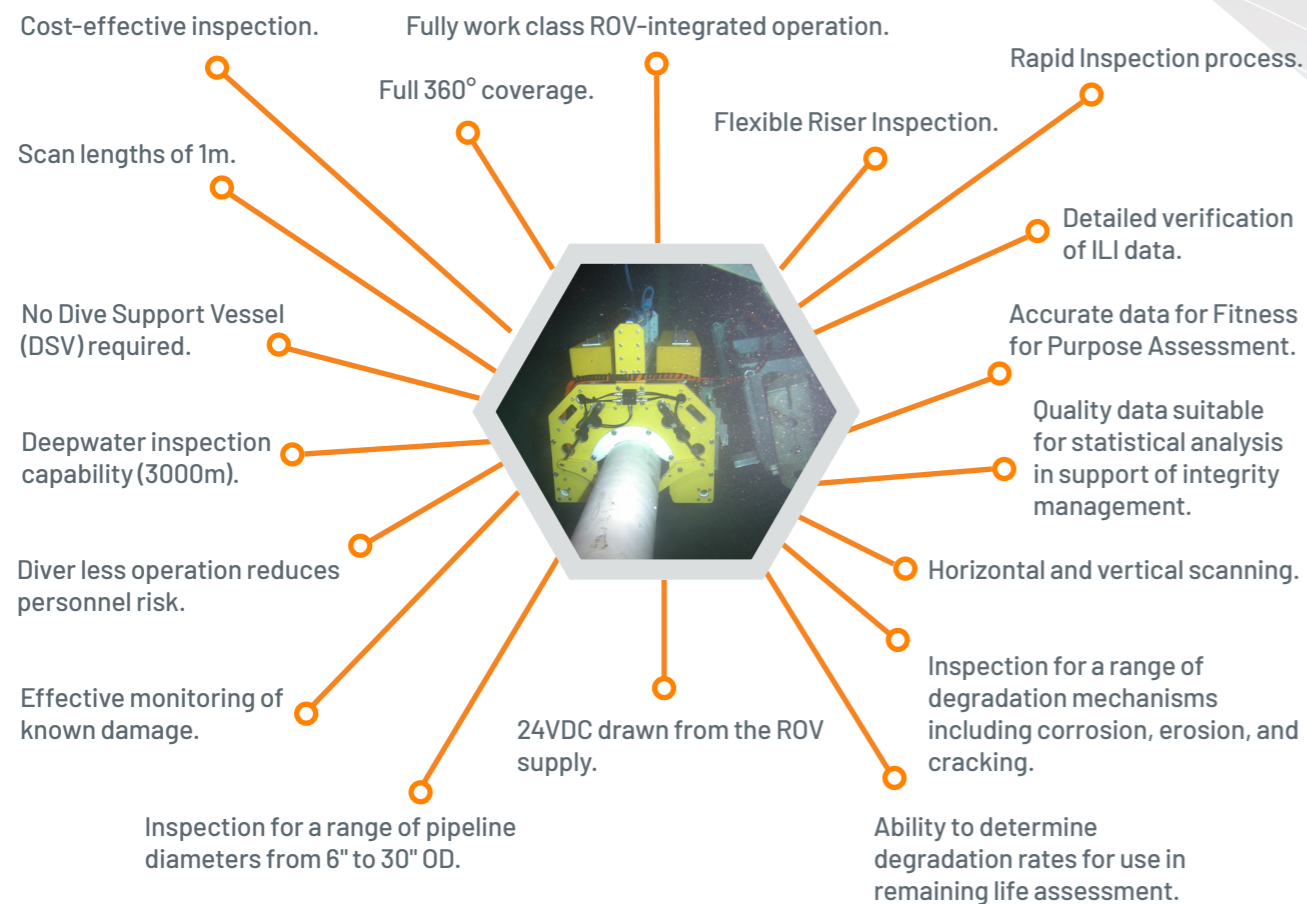


INSPECTION PROCESS











Recent developments allow subsea inspection of concrete weight coated pipelines through the use of subsea Computed Tomography.

KEY BENEFITS



They can be used for the following applications:

-  Verification of ILI tool findings
-  Inspection for internal corrosion and erosion (corrosion mapping and/or TOFD/Phased Array)
-  Inspection for preferential weld corrosion/erosion (TOFD)
-  Inspection for fatigue cracking (TOFD/Phased Array)
-  Inspection for wet H₂S damage in sour service (corrosion mapping, automated pulse echo, Phased Array and TOFD)
-  Inspection for chloride pitting/SCC in corrosion resistant alloys (corrosion mapping, automated pulse echo, Phased Array and TOFD)
-  Inspection of Subsea fabrication and repair welds (TOFD and automated pulse echo/Phased Array)
-  Component geometry measurement including ovality inspection (0° line scans).

QA AND HS&E

Sonomatic operate under an integrated QHSE management system and are committed to the highest quality and safety of service provision | ISO 9001: 2015: 00007140 | ISO 14001:2015:00037371 | ISO 45001:2018:00037372 | ISO 17020: 2012: 4276 | Achilles FPAL Verified: 076712 | SEQual 1988 | British Safety Council Member: S0388440 |



CONTACTS

EUROPE AND AFRICA

Graham Marshall

Subsea Project Manager
T: +44 (0)1224 823 960
E: Graham.Marshall@sonomatic.com

Stuart Ley

Topside Project Manager
T: +44 (0)1224 823 960
E: Stuart.Ley@sonomatic.com

Danielle Gunns

Project Delivery Manager (Warrington)
T: +44 (0) 1925 414 000
E: Danielle.Gunns@sonomatic.com

John Lilley

Senior Technical Consultant
T: +44 (0)1925 414 000
E: John.Lilley@sonomatic.com

AUSTRALASIA

Jonathan Millen

Australia West Coast Project Manager
T: +61 415 850 346
E: Jon.Millen@sonomatic.com.au

Judd McCann

Australia East Coast Project Manager
T: +61 488 442 019
E: Judd.McCann@sonomatic.com.au

Zach McCann

South East Asia Regional Manager
T: +61 404 797 670
E: Zach.McCann@sonomatic.com.au

Alex Cesan

Australia & South East Asia General Manager
T: +61 498 442 666
E: Alex.Cesan@sonomatic.com.au

AMERICAS

Esteban Cesan

General Manager Americas
T: +1 832 977 0303
E: Esteban.Cesan@sonomatic.com

MIDDLE EAST

Gordon Reid

Regional Manager
T: +971 26 580 708
E: Gordon.Reid@sonomatic.com



www.sonomatic.com



www.cwl.group