

# DATA SHEET

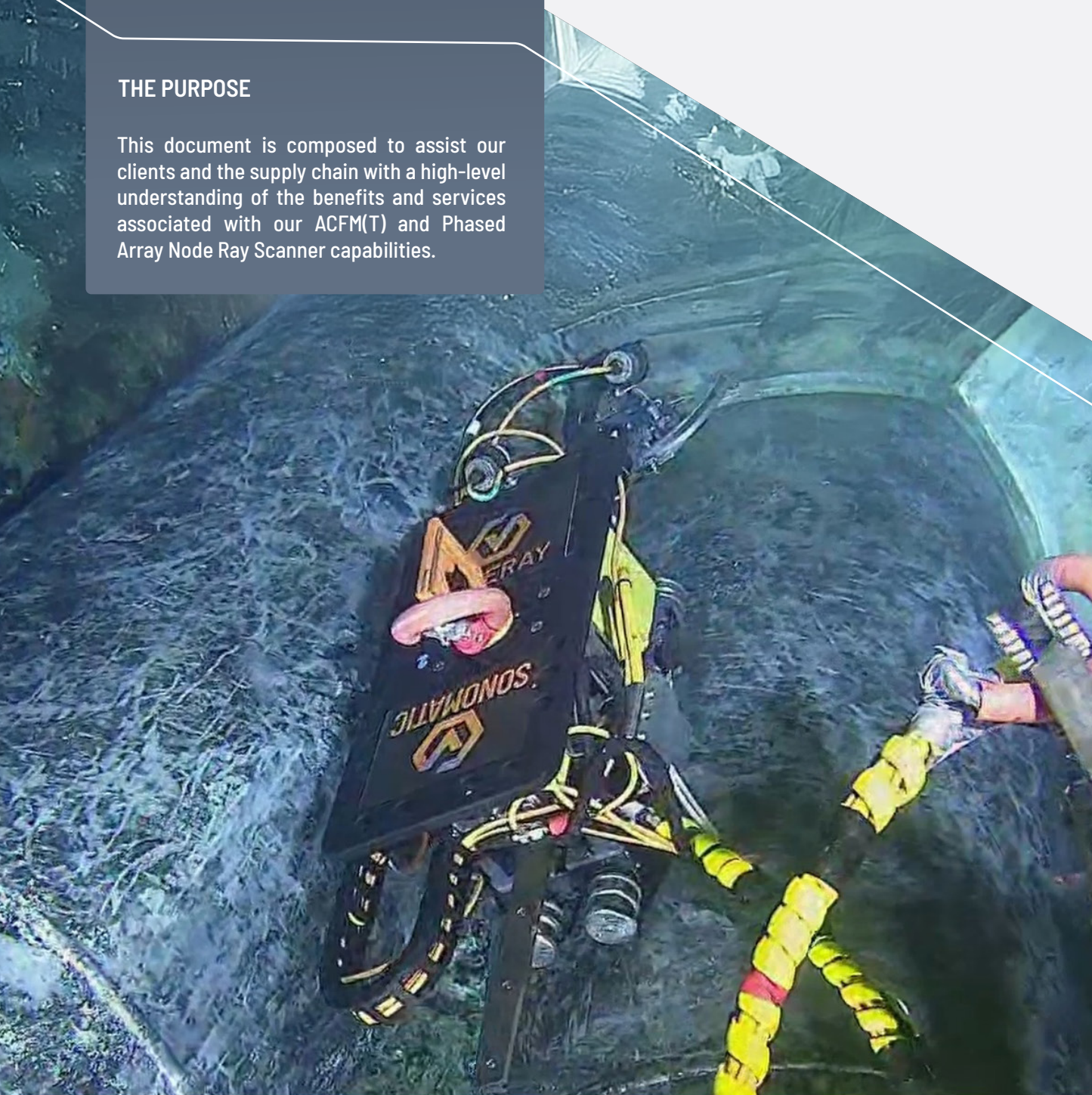
## ACFM(T) & PHASED ARRAY NODE RAY SCANNER

### THE PURPOSE

This document is composed to assist our clients and the supply chain with a high-level understanding of the benefits and services associated with our ACFM(T) and Phased Array Node Ray Scanner capabilities.



# SONOMATIC



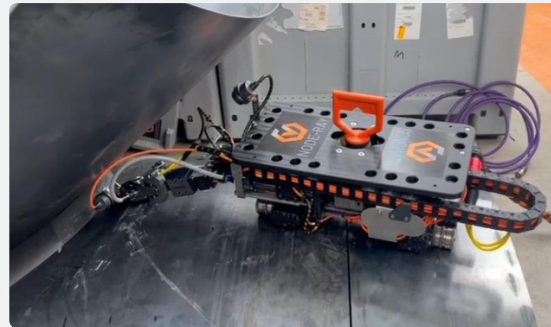


# ACFM(T) & PHASED ARRAY NODE RAY SCANNER

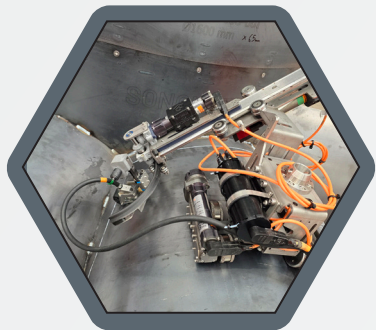
## OVERVIEW

Sonomatic proudly introduces the ACFM(T) Node Ray Scanner, a cutting-edge solution for inspecting complex subsea nodes. This system combines Alternating Current Field Measurement (ACFM(T)) with Phased Array Total Focusing Method (TFM), delivering both surface-breaking crack detection and full volumetric weld coverage.

This dual-technology approach sets a new standard for non-destructive testing in challenging underwater environments.



## KEY FEATURES

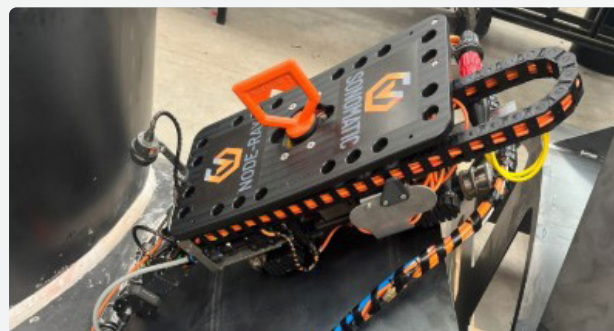


The Node Ray Scanner is designed to overcome the limitations of traditional inspection methods. Its articulating multi-function head allows precise tracking of intricate node geometries, ensuring consistent probe positioning throughout the inspection process.

The adaptive crawler platform accommodates a wide range of diameters and configurations, eliminating the need for multiple scanners and reducing operational complexity. Together, these features provide high accuracy and reliability for inspecting irregular surfaces and complex weld geometries.

## CLIENT BENEFITS

- 🔧 **Comprehensive Coverage:** Surface and volumetric inspection in one deployment.
- 🔧 **Efficiency:** Rapid scanning reduces operational downtime.
- 🔧 **Versatility:** Adaptable to varied node sizes and configurations.
- 🔧 **Integrity Assurance:** Proven technology for critical subsea infrastructure.

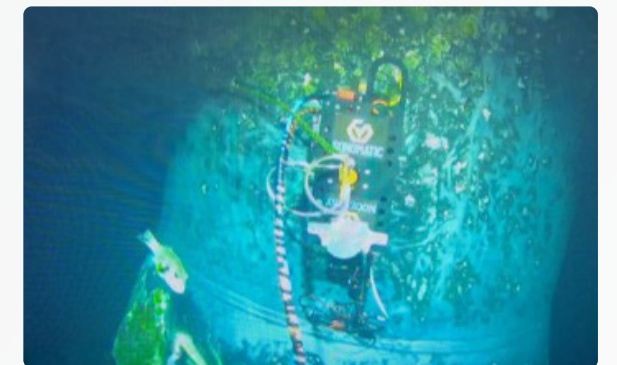
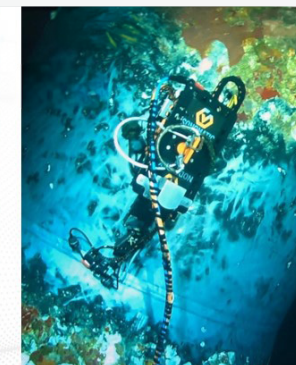
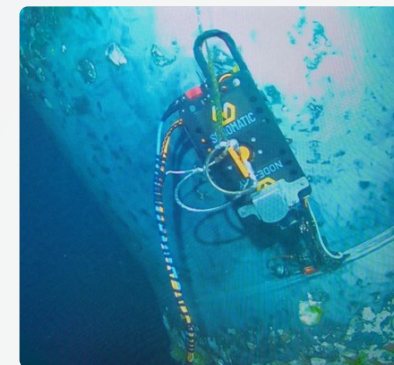


## CASE STUDY: FIRST-EVER ACFM(T) & PHASED ARRAY DEPLOYMENT ON SUBSEA NODES

Sonomatic successfully completed the first-ever subsea node inspection using ACFM(T) combined with Phased Array TFM. This project addressed a long-standing industry challenge—accurate inspection of complex weld geometries in subsea environments.

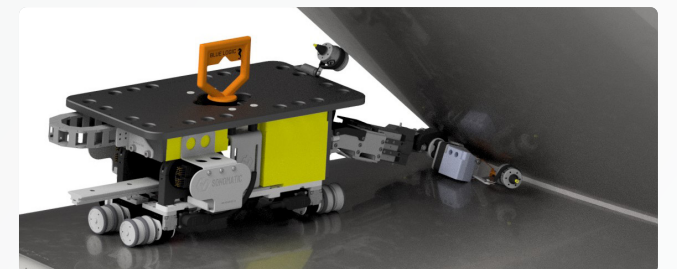
### Highlights of the Deployment

- 🔧 **Custom Adaptation of proprietary Stingray Scanner:** Enhanced for node tracking and complex geometry scanning.
- 🔧 **Articulating Multi-Function Head:** Maintained optimal probe positioning throughout inspection.
- 🔧 **Rapid Development:** Delivered from concept to deployment in one year by Sonomatic's E2i team.
- 🔧 **Outcome:** Reliable detection of surface-breaking cracks and volumetric weld coverage, setting a new benchmark for offshore asset integrity.



## WHY CHOOSE SONOMATIC

Sonomatic is committed to solving complex subsea challenges through innovation. Our first-to-market approach ensures clients benefit from industry-leading technology tailored to offshore asset integrity requirements. With in-house mechanical and electronic design expertise, we provide solutions that combine engineering excellence with practical application in the field.



## QA AND HS&E

Sonomatic operate under an integrated QHSE management system and are committed to the highest quality and safety of service provision | ISO 9001:2015: 00007140 | ISO 14001: 2015:00037371 | ISO 45001: 2018:00037372 | ISO 17020:2012: 4276 | Achilles FPAL Verified: 076712 | SEQual 1988 | British Safety Council Member: S0388440 |



# KEY CONTACTS

## EUROPE AND AFRICA

**Graham Marshall**  
Subsea Project Manager  
T: +44 (0) 1224 823 960  
E: [Graham.Marshall@sonomatic.com](mailto:Graham.Marshall@sonomatic.com)

**Sean Peters**  
Project Manager  
T: +44 (0) 1925 414 000 | M: +44 (0) 7386 807 346  
E: [Sean.Peters@sonomatic.com](mailto:Sean.Peters@sonomatic.com)

**Charles Loader**  
General Manager  
T: +44 (0) 1925 414 000 | M: +44 (0) 7376 714 765  
E: [Charles.Loader@sonomatic.com](mailto:Charles.Loader@sonomatic.com)

## AMERICAS

**Esteban Cesan**  
President  
T: +1 832 977 0303  
E: [Esteban.Cesan@sonomatic.com](mailto:Esteban.Cesan@sonomatic.com)

**Agata Surowiec**  
Vice President - Business Development  
T: +1 832 316 9925  
E: [Agata.Surowiec@sonomatic.com](mailto:Agata.Surowiec@sonomatic.com)

**Gideon Vany Zyl**  
Operations Manager  
T: + (346) 498 2892  
E: [Gideon.VanZyl@sonomatic.com](mailto:Gideon.VanZyl@sonomatic.com)

## AUSTRALASIA

**Jonathan Millen**  
Operations Manager - Australia  
T: +61 477 030 058  
E: [Jon.Millen@sonomatic.com.au](mailto:Jon.Millen@sonomatic.com.au)

**Alex Cesan**  
General Manager - Australia & NZ  
T: +61 498 442 666  
E: [Alex.Cesan@sonomatic.com.au](mailto:Alex.Cesan@sonomatic.com.au)

**Zach McCann**  
Region Manager - South East Asia  
T: +60 361 581 185 / 1180  
M: +60 12 555 1569 / +61 404 797 670  
E: [Zach.Mccann@sonomatic.com.my](mailto:Zach.Mccann@sonomatic.com.my)

## MIDDLE EAST

**Clayton Webb**  
Regional Manager  
T: +971 26 580 708  
E: [Clayton.Webb@sonomatic.com](mailto:Clayton.Webb@sonomatic.com)



[www.sonomatic.com](http://www.sonomatic.com)