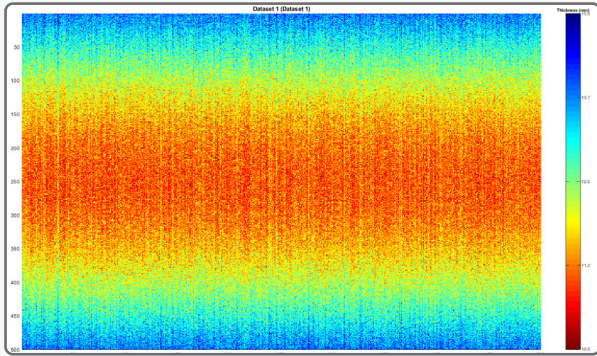


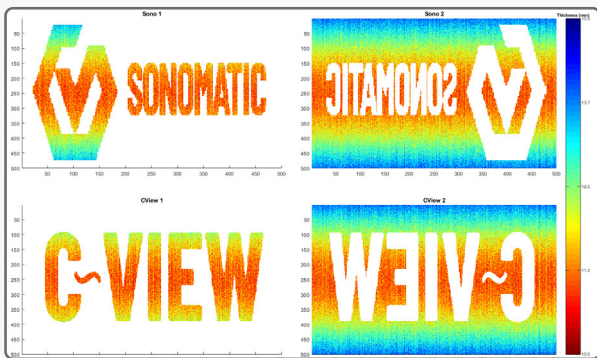
# C~VIEW - BOTTOM OF LINE



This example creates a thickness map as shown on the left, a further 4 corrosion maps are created which have Sonomatic and C~View text in the composites. These additional maps can be chosen in C-scan selection on the right panel.

In addition to the marketing benefit these do serve a purpose to help the user understand the different orientations in 3D maps.

The maps on the left show the logos and text backwards in the two on the right, this is intentional.



- Select the 3D view from the toolbar
- 3D control panel on the right
- Change the resolution to "High"
- Different maps can be chosen from the "Top:" option. For example, "Top: CView 1".

The initial selection (CView 1) appears correct on when viewed on one side of the flat plate but appears backwards on the far side. This is to be expected (but its not always obvious) due to the way the maps are laid out of the geometry.

If you rotate the plate around you will see that the letters (for example C) is in the same physical location when you think about then from an individual X,Y map location.

The names and logos backwards as shown above are purely to demonstrate how you can add to a data set to display easy to read text on both surfaces which can be useful for:

- Marketing
- Communication with stakeholders

These steps can be repeated and you will see the same on the pipe and the pipe arc sections if you update the geometry and modify with the settings.

In addition "Annotations" can be added to which overlay black text on the models at user defined locations, adding context and other reference information, e.g. year of inspection.

