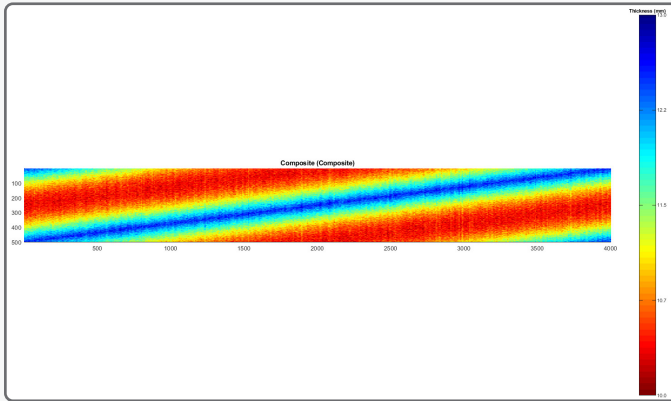


C~VIEW - LARGE DATASETS

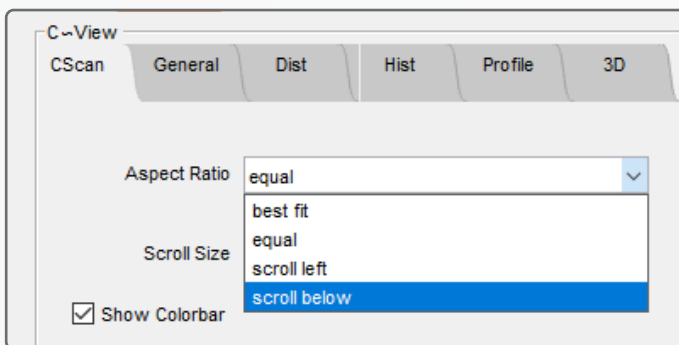


C-Scan when viewed by default

This example demonstrates how to correct for scan misalignment and to investigate individual features of a scan.

The data (obviously manufactured), is a valid demonstration of the capability.

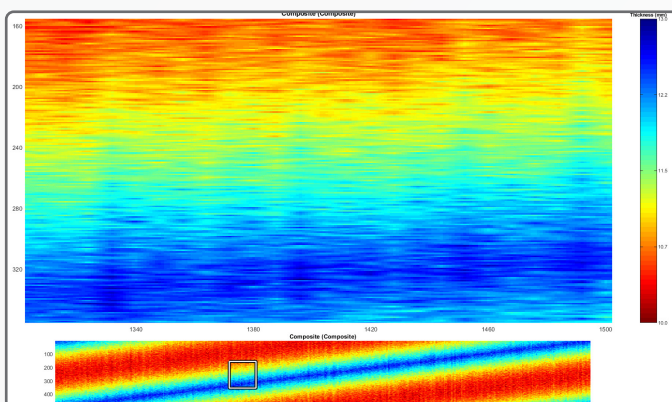
In this case we want to compare the area around the Sonomatic logo from the 2 datasets.



Change the aspect ratio view to "scroll below" as shown.

This will update the image to include a master axes view as well as a zoomed in view.

Edit the numbers in the "Scroll Size" box to the size of the area you want to zoom in on, for example: [200 200]



The zoomed area is highlighted by the black and white box.

You can control the position by:

- Drag the box by left clicking on the box and moving the mouse.
- Double clicking with the left mouse to view a particular area.