



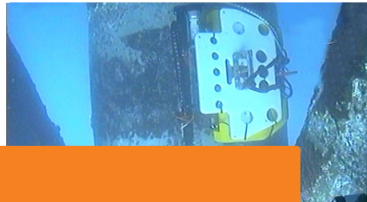
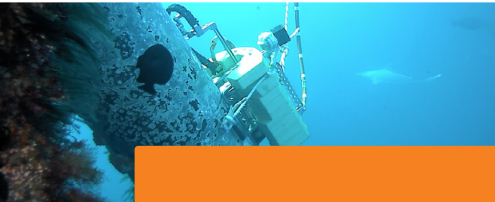
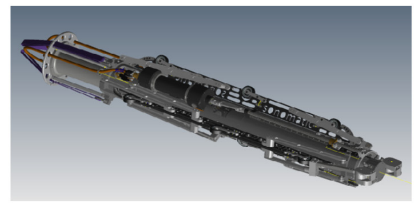
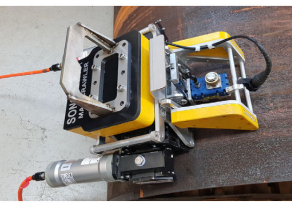
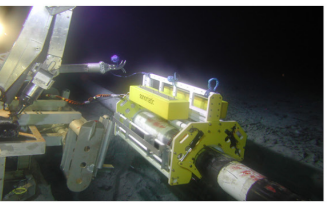
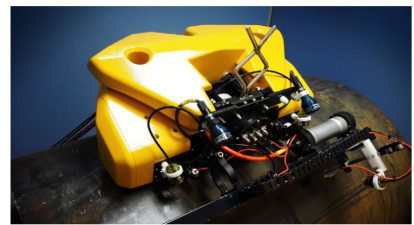
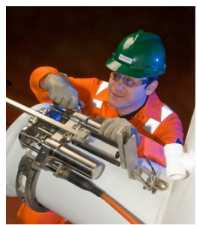
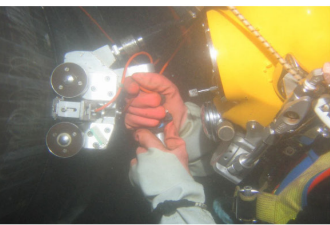
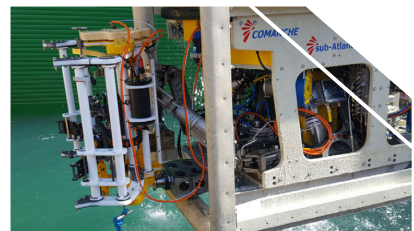
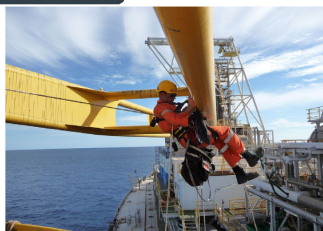
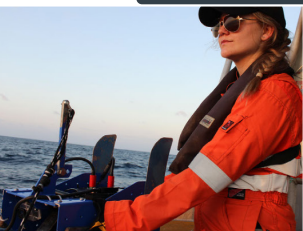
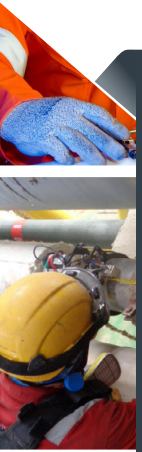
SONOMATIC

DATA SHEET

END DOME ROBOTIC INSPECTION SYSTEM (EDRIS)

THE PURPOSE

This document is composed to assist our clients and the supply chain with a high-level understanding of the benefits and services associated with our End Dome Robotic Inspection System (EDRIS).

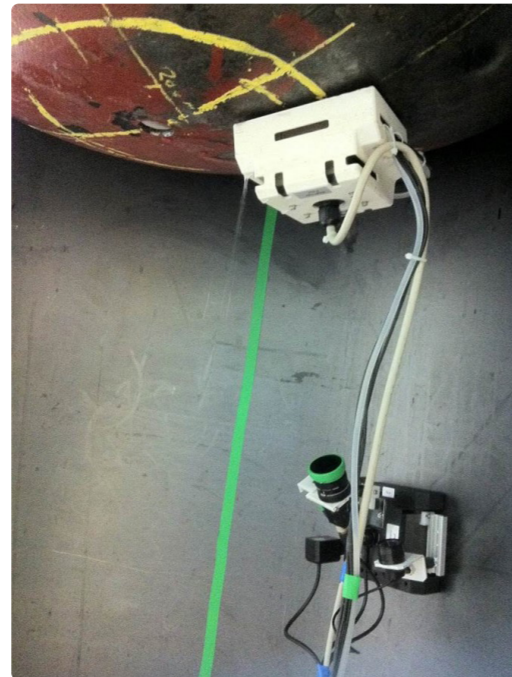


EDRIS

Sonomatic have developed an End Dome Robotic Inspection System (EDRIS). This miniature scanner has a deployment system which eliminates the requirements for manned entry. The deployment tool carrying the scanner is attached to the skirt allowing for the deployment of the scanner to the domed end. Video tracked corrosion mapping inspection technique is currently fitted to the scanner, alternative attachments and inspection tooling are being developed and engineered, and through continuous collaboration with our clients, refined.

THE ISSUE

Effective NII of vertical pressure vessels typically includes inspection of the bottom head. The pressure vessel's bottom domed end is usually the main area at risk of corrosion due to fluids knocking out of gas trains due to differential pressure. These locations are commonly difficult to inspect because of the skirt being welded to the tangent line of the head creating an inaccessible area for inspection or requiring confined space entry to inspect. Sonomatic has addressed this issue by development of the EDRIS Scanner which ensures inspection, meeting the Non-Intrusive Inspection (NII) requirements for vertical pressure vessels.



FEATURES

EDRIS safety benefits are the reduced risk of confined space entry, historically personnel would be required to enter the confined space with conventional NDT methods to complete the intrusive inspection requirements.

BENEFITS

- 📌 Exceptionally small size and profile to maximise coverage for remote automated scanning.
- 📌 Data suitable for use in statistical analysis as part of NII justification.
- 📌 Remote inspection for areas of restricted access.
- 📌 Fully steerable plus ability to turn on own axis.

QA AND HS&E

Sonomatic operate under an integrated QHSE management system and are committed to the highest quality and safety of service provision | ISO9001: 2015: 00007140 | ISO17020: 2012: 4276 | Achilles FPAL Verified: 076712 | British Safety Council Member: S0388440



CONTACTS

WORLDWIDE

John Lilley
Senior Technical Consultant
T: +44 (0) 1925 414 000
E: John.Lilley@sonomatic.com

EUROPE AND AFRICA

Graham Marshall
Subsea Project Manager
T: +44 (0) 1224 823 960
E: Graham.Marshall@sonomatic.com

Stuart Ley
Topside Project Manager
T: +44 (0) 1224 823 960
E: Stuart.Ley@sonomatic.com

Donna Stewart
Integrity Operations Coordinator
T: +44 (0) 1224 823 960
E: Donna.Stewart@sonomatic.com

Danielle Gunns
Project Delivery Manager (Warrington)
T: +44 (0) 1925 414 000
E: Danielle.Gunns@sonomatic.com

AUSTRALASIA

Paul Edmonds
Australia West Coast Project Manager
T: +61 415 850 346
E: Paul.Edmonds@sonomatic.com

Judd McCann
Australia East Coast Project Manager
T: +61 488 442 019
E: Judd.McCann@sonomatic.com

Zach McCann
South East Asia Regional Manager
T: +61 404 797 670
E: Zach.McCann@sonomatic.com

Alex Cesan
Australia & South East Asia General Manager
T: +61 498 442 666

MIDDLE EAST

Gordon Reid
Regional Manager
T: +971 26 580 708
E: Gordon.Reid@sonomatic.com

AMERICAS

Esteban Cesan
General Manager Americas
T: +1 832 977 0303
E: Esteban.Cesan@sonomatic.com