



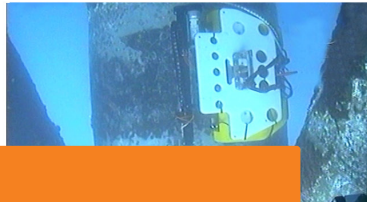
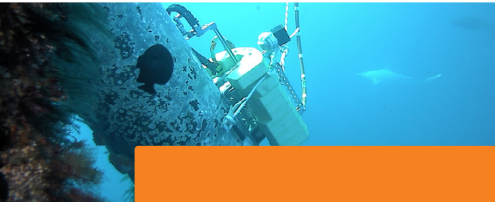
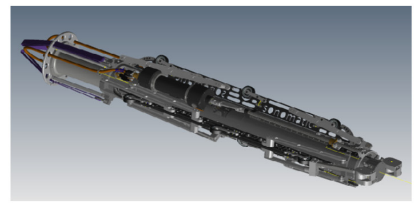
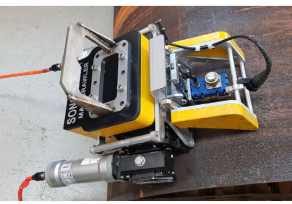
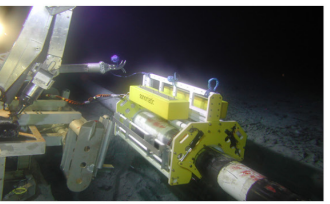
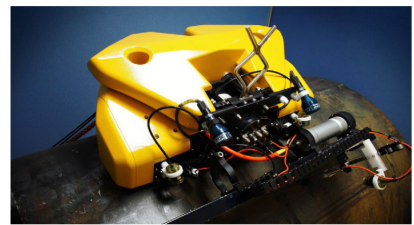
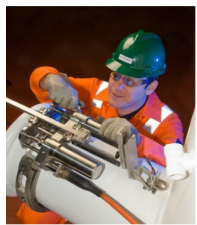
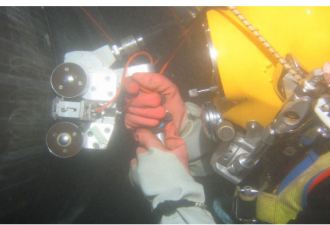
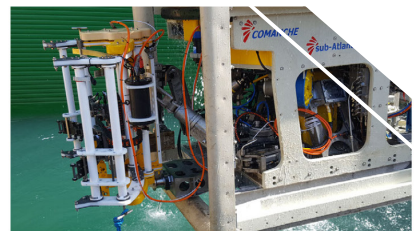
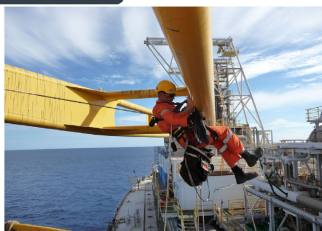
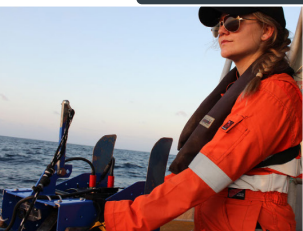
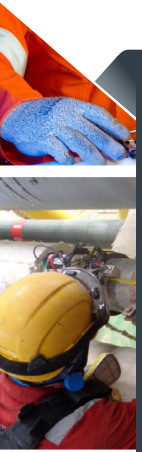
SONOMATIC

DATA SHEET

FINITE ELEMENT ANALYSIS

THE PURPOSE

This document is composed to assist our clients and the supply chain with a high-level understanding of the benefits and services associated with our Finite Element Analysis capabilities.



FINITE ELEMENT ANALYSIS

Plant design and materials selection aim to minimise degradation of in-service pressure equipment, however, damage is inevitable in many cases. Hence there is a strong requirement to justify safe operation of damaged equipment, this is formally known as Fitness For Service (FFS) assessment. When damage is identified it is crucial to demonstrate not only whether the item is safe to operate but how much further degradation can be tolerated and what this means for the future of the asset.

Continuous operation of pressure piping and vessels is synonymous with increased productivity. Live pressure equipment also presents a significant, yet manageable, hazard to personnel. This is especially true in the context of toxic or volatile substance containment at high pressures and temperatures.

Sonomatic has developed efficient methods to take advantage of inspection data in the context of Fitness For Service (FFS) assessments. Finite element models of equipment can be generated with any areas of degradation defined by direct input of inspection data. The accuracy and full resolution of the inspection data is reflected in the 3D model. Non-linear analysis of the model provides representative information on the condition of the equipment. Sonomatic have extensive experience both in FFS assessments and the interpretation of inspection results for reliable defect characterisation.

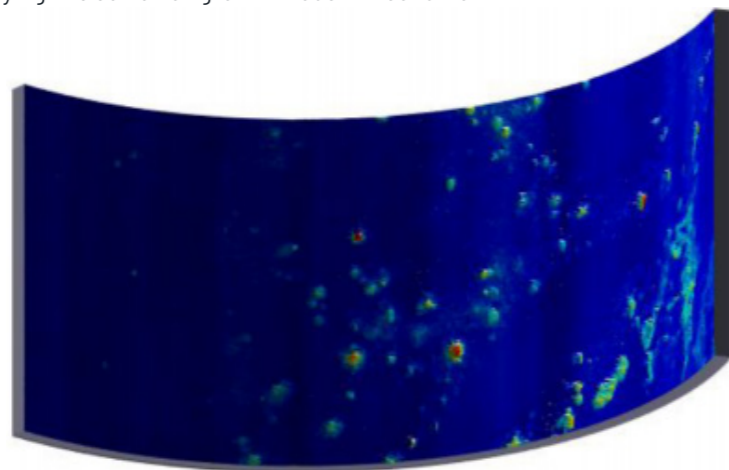
Corrosion growth models have been developed by Sonomatic which allow the future condition of the damaged item to be estimated. Applying the corrosion growth models

to the finite element analysis, allows the margins on limiting conditions to be determined and future inspection strategies to be defined.

As a result of these developments, the cost and turnaround time for a finite element FFS assessment is competitive with the simplified and more conservative assessments. It is now practical to proceed directly to finite element assessment to determine the integrity of a piece of equipment.

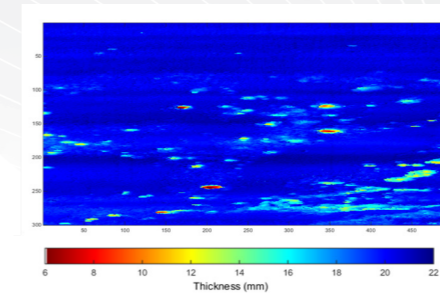
Industry FFS guidelines present a range of approaches to which a basic trade-off exists between ease of analysis and the level of conservatism. Level 1 or Level 2 assessment is possible through basic numerical methods which take advantage of conservatism built into the pressure equipment design codes. Coarse measurement and approximations of the damaged geometry may suffice at this level of analysis. Even when highly accurate geometric measurements exist, they are simplified to facilitate the analysis.

Level 3 assessment uses finite element analysis to build a 3D representation of the asset; the known operating conditions are applied to the model to determine whether the asset can be considered safe for continued operation. As the Level 3 analysis does not use the same simplifications used at Level 1 and Level 2, the results provide the most accurate assessment of the asset's condition. Sonomatic offer efficient, cost-effective Level 3 assessments based on inspection data, providing a true reflection an asset's condition.

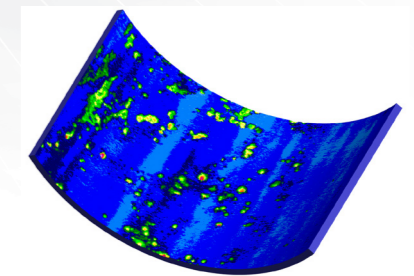


ADVANCED INSPECTION

- ✔ High resolution
- ✔ Accurate measurement
- ✔ Ultrasonic corrosion mapping
- ✔ 3D laser scanning
- ✔ Richness and accuracy of inspection data maintained.
- ✔ No simplification of measured geometry.



3D GEOMETRY



MATERIALS SPECIFICATION

Elastic - Plastic Behaviour

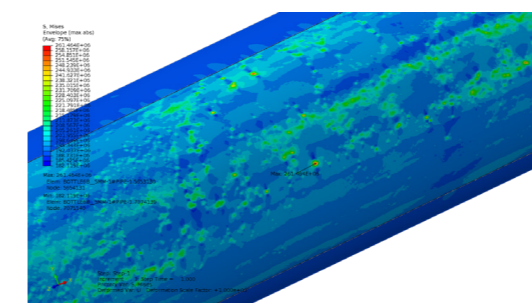
LOADS AND CONSTRAINTS

- ✔ Design and operating conditions
- ✔ Global mechanical loading
- ✔ Thermal loading

RELEVANT EXPERTISE

- ✔ Reliable interpretation of inspection data for geometry definition.
- ✔ Detailed statistical comparison of repeat inspection data to establish accurate corrosion rates.
- ✔ Finite element modelling.
- ✔ Fitness for service and Integrity Assessment.

HIGHLY REPRESENTATIVE FINITE ELEMENT MODEL



Reliable understanding of limiting conditions.

Informed integrity decisions.

QA AND HS&E

Sonomatic operate under an integrated QHSE management system and are committed to the highest quality and safety of service provision | ISO9001: 2015: 00007140 | ISO17020: 2012: 4276 | Achilles FPAL Verified: 076712 | British Safety Council Member: S0388440



CONTACTS

EUROPE AND AFRICA

Graham Marshall

Subsea Project Manager
T: +44(0)1224 823 960
E: Graham.Marshall@sonomatic.com

Stuart Ley

Topside Project Manager
T: +44(0)1224 823 960
E: Stuart.Ley@sonomatic.com

Donna Stewart

Integrity Operations Coordinator
T: +44(0)1224 823 960
E: Donna.Stewart@sonomatic.com

Danielle Gunns

Project Delivery Manager (Warrington)
T: +44(0) 1925 414 000
E: Danielle.Gunns@sonomatic.com

John Lilley

Senior Technical Consultant
T: +44(0)1925 414 000
E: John.Lilley@sonomatic.com

Matthew Fleming

Principal Integrity Engineer
T: +44(0)1925 414 000
E: Matthew.Fleming@sonomatic.com

AMERICAS

Esteban Cesan

General Manager Americas
T: +1832 977 0303
E: Esteban.Cesan@sonomatic.com

AUSTRALASIA

Paul Edmonds

Australia West Coast Project Manager
T: +61 415 850 346
E: Paul.Edmonds@sonomatic.com

Judd McCann

Australia East Coast Project Manager
T: +61 488 442 019
E: Judd.McCann@sonomatic.com

Zach McCann

South East Asia Regional Manager
T: +61 404 797 670
E: Zach.McCann@sonomatic.com

Alex Cesan

Australia & South East Asia General Manager
T: +61 498 442 666
E: Alex.Cesan@sonomatic.com

MIDDLE EAST

Gordon Reid

Regional Manager
T: +971 26 580 708
E: Gordon.Reid@sonomatic.com

