

SPECIALIST PACKAGE

REMOTE INTERNAL INSPECTION CAMPAIGN SUPPORT

THE PURPOSE

This document has been prepared to help our clients and the supply chain understand the technical capabilities, benefits and services associated with our world-leading RII Campaign Support services.



SONOMATIC



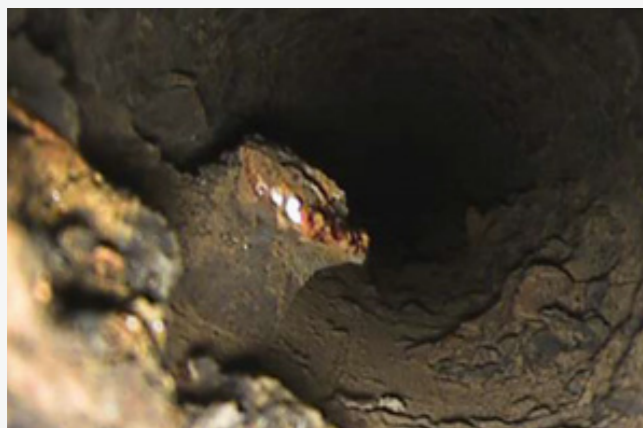
RII CAMPAIGN SUPPORT

Regardless of the asset, turnarounds are major undertakings that often stretch project time, manpower, and technical capability. The Sonomatic Remote Internal Inspection (RII) Campaign Support Package has been carefully curated with the express goal of removing these issues by providing an unparalleled RII inspection service that meets the requirements of engineers, planners and regulatory bodies.

PACKAGE BENEFITS

The Campaign Support Package provides the assistance you need to keep your project on time and to budget. Some of the key benefits of this package are:

- ✔ Dedicated, experienced, skilled, motivated and driven RII teams.
- ✔ Sonomatic owned, operated and maintained core RII equipment.
- ✔ Robust RII specific reporting processes.
- ✔ Dedicated and robust procedures for inspection of all types of assets, plants, processes and pressure equipment.
- ✔ Increased data availability for asset integrity management assessments.
- ✔ Bespoke and specialist access tooling.
- ✔ Increased number of repeatable, comparable inspections for future degradation analysis.
- ✔ A reduction in number of staff/personnel on-site and subsequent logistics.
- ✔ A reduction in sim-ops clashes and high-risk activities.
- ✔ Increased process integrity data capture for process/operations.
- ✔ A reduction in Confined Space Entries (CSEs) and intrusive access requirements.
- ✔ Full turnkey solution.



COMMONLY INSPECTED ASSETS

- ✔ Absorbers
- ✔ Aviation and Aero-derivative Engines
- ✔ Acid Gas Incinerators
- ✔ Air and Nitrogen Receivers
- ✔ Boilers
- ✔ Coil Systems
- ✔ Columns
- ✔ Combustion Engines
- ✔ Compressors
- ✔ De-Aerators
- ✔ Dehydration Beds
- ✔ Electrical Exchangers
- ✔ Fin Fan Exchangers
- ✔ Flare Knock Out Drum
- ✔ Flow Meters
- ✔ Generators (Electric Motor)
- ✔ Headers
- ✔ Heat Recovery Steam Generators
- ✔ Membrane Filters
- ✔ Printed Circuit Heat Exchangers (PCHE)
- ✔ Pressure Piping
- ✔ Process Controls - Valves etc.
- ✔ Propane/Ethylene/Methane Chiller
- ✔ Reboiler Exchangers
- ✔ Regeneration Packages
- ✔ Scrubbers
- ✔ Separators and Condensers
- ✔ Shell and Tube Exchangers
- ✔ Steam Systems
- ✔ Turbines (Steam and Gas)

SONOMATIC INTEGRATED EQUIPMENT

EQUIPMENT MANUFACTURER RELATIONSHIPS

Sonomatic has an extensive range of standard and custom-made systems and tooling. Our team also works directly with leading Original Equipment Manufacturers (OEMs) to improve many of the standardised systems to include advanced functions, resulting in a higher level of detection and integration. Over the years, several of these innovations have been so successful in our previous projects that OEMs have recognised their value and integrated them into their open market products.

SONOMATIC CUSTOM TOOLING

Knowing and understanding key inspection locations is a skill that only comes with many years of practice and on-site experience. In many specialised situations, the tooling we require to take the inspection system to these locations simply doesn't exist or isn't readily available. For these projects, our team has built its own sets of custom tools. These specialist access tools are exclusive to Sonomatic and help us deliver more efficient and accurate results.

OWNING & MAINTAINING EQUIPMENT

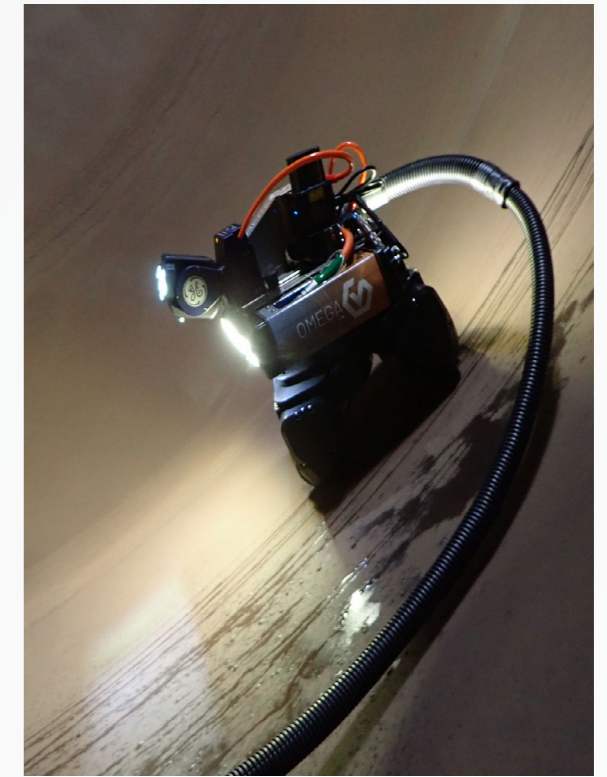
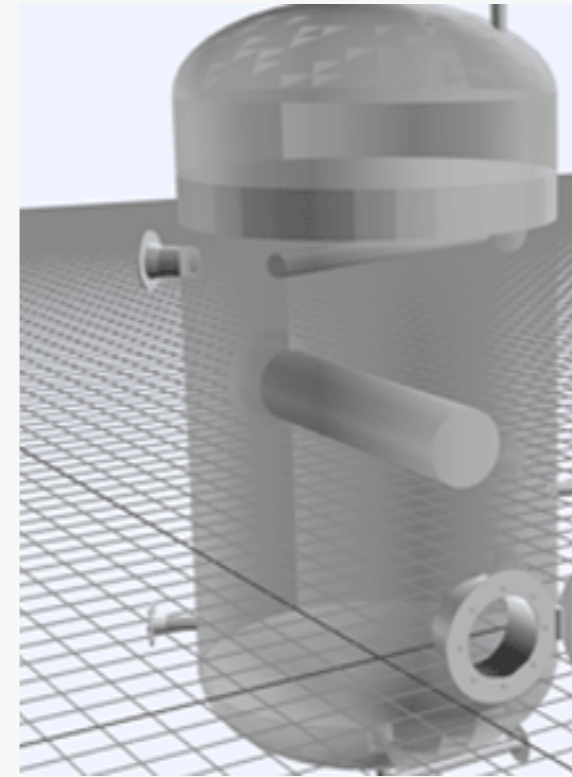
We understand that with the tight time frames of a shutdown, our customers value speed and efficiency. As such, the Sonomatic RII team own, maintain and operate all of their core inspection systems. This ensures that all sets of equipment and associated access tooling are fully serviceable when mobilised to site. We also keep a supply of the most crucial parts, lenses, adapters, and associated accessories on hand so if a mishap were to occur, we have capacity to ensure there are no major delays to the project.

OUR TEAM

You need the right people with the proper training to get results. Sonomatic is proud to have some of the world's most experienced RII technicians as part of their team, ensuring that you get an accurate outcome the first time, every time.

Our team of specialists have in-field execution experience and are equipped with an extensive range of proprietary equipment. This offers an integrated execution approach and inspection approach that meets the requirements of your engineers, planners and statutory inspectors, helping you get results even when your contracted day-to-day resources are stretched.

Our extensive recruiting process requires each applicant to display skills across a wide range of areas in the initial stage before progressing. Our RII-specific training program fully prepares our team for the field by educating them in six areas: systematic inspection procedures, degradation identification, tooling identification competency, tooling application competency, process optimisation training, and safety training.



With our team's vast experience, we bring more to every inspection. Drawing upon years of global expertise in degradation and operational issues allows us to help you further reduce risk and increase your confidence in operating the plant reliably and safely.

TO GET THE RIGHT RESULTS, YOU NEED THE RIGHT PEOPLE

SYSTEM INSPECTION PROCEDURES

RII technicians are trained in systematic inspection procedures to enable higher levels of coverage, record, secure and prepare data in a logical format for communication, and correctly perform the post-inspection review processes.

DEGRADATION IDENTIFICATION

Our team has been trained in degradation identification and detection utilising 2D imagery. This is important as technicians must know what they are looking at to capture all relevant data.

TOOLING IDENTIFICATION COMPETENCY

Sonomatic technicians are trained across a range of digital camera systems, so they know what camera is required and why, how to set it up correctly and what specific lenses need to be applied to get the best results.

TOOLING APPLICATION COMPETENCY

Our team is trained in using and applying specialist support tooling that we design and build to ensure cameras are placed in the correct focal ranges, giving the clearest possible view of potential degradation.

PROCESS OPTIMISATION TRAINING

Sonomatic RII technicians are trained in process and operational aspects to ensure they can detect and highlight indications of process reliability, helping your functional team run your facility at the highest efficiency.

SAFETY TRAINING

Our team has been trained to safely use, operate, and get equipment into high-level work environments without causing sim-ops conflicts, incidents, or accidents.

KEY CONTACTS

SONOMATIC

Sean Peters

Project Manager - Europe and Africa

T: +44 (0) 1925 414 000 | M: +44 (0) 7386 807 346

E: Sean.Peters@sonomatic.com

Alex Cesan

General Manager - Australia and NZ

T: +61 498 442 666

E: Alex.Cesan@sonomatic.com.au

Zach McCann

Region Manager - South East Asia

T: +60 361 581 185 /1180

M: +60 12 555 1569 / +61 404 797 670

E: Zach.Mccann@sonomatic.com.my

Charles Loader

General Manager - Europe and Africa

T: +44 (0) 1925 414000 | M: +44 (0) 7376 714765

E: Charles.Loader@sonomatic.com

Esteban Cesan

President - Americas

T: +1 832 977 0303

E: Esteban.Cesan@sonomatic.com

Clayton Webb

Regional Manager - Middle East, Caspian & Black Sea

T: +9712 6580708 | M: +971 50 313 9254

E: Clayton.Webb@sonomatic.com

AUAV

James Rennie

Managing Director

T: +61 1300 738 521 | M: +61 497 070 576

E: James.Rennie@auav.com.au

Jamie Holyoak

General Manager

T: +61 1300 738 521 | M: +61 473 136 614

E: Jamie.Holyoak@auav.com.au

Barry Nixon

Operations Manager - UK

T: +44 (0) 1224 823960

E: Barry.Nixon@auav.co.uk

Luke Campbell

Operations Manager - Western Australia

T: +61 1300 738 521 | M: +61 467 677 886

E: Luke.Campbell@auav.com.au



www.sonomatic.com