

SPECIALIST PACKAGE

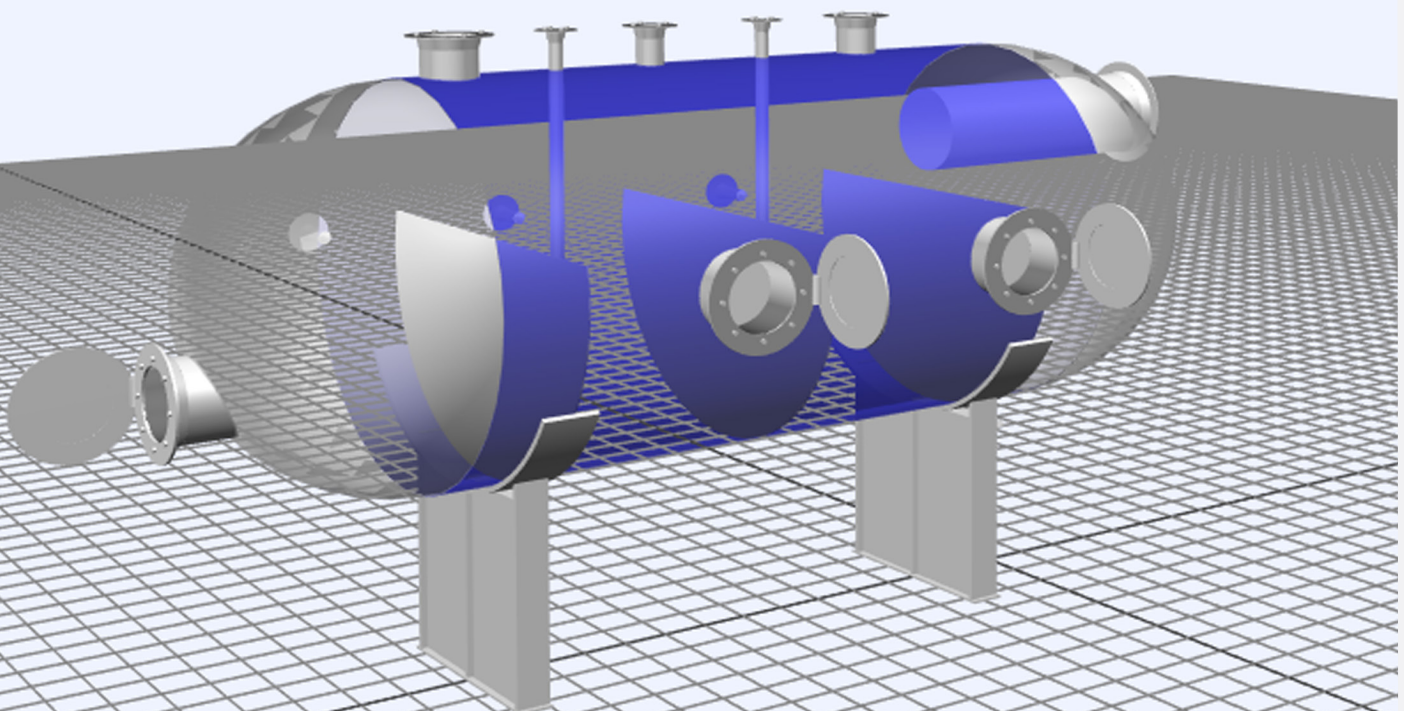
FRONT END ENGINEERING
DESIGN FOR RII AND NII

THE PURPOSE

This document has been prepared to help our clients and the supply chain understand the technical capabilities, benefits and services associated with our world leading RII and NII Front End Engineering Design services.



SONOMATIC



RII AND NII FRONT END ENGINEERING DESIGN

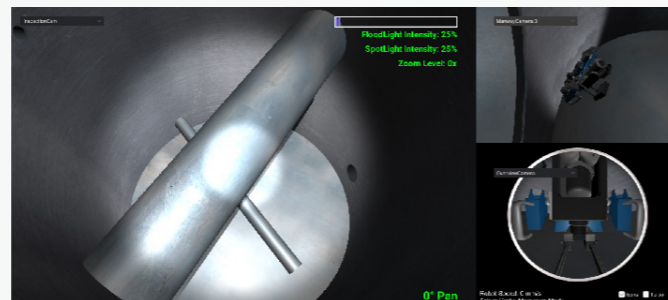
Sonomatic has a proven track record in optimising the application of RII in greenfield projects. An RII review of greenfield installations provides the best opportunity to maximise the application of Advanced-RII. History has proven that RII integration in the Pre-FEED and FEED stages of the project maximises RII capabilities and creates the biggest savings, exceptional coverage and reduces shutdown time frames.

Our most experienced technicians and engineers are able to directly integrate into your design and asset integrity teams to:

- ✔ Ensure advanced RII and NII methods and techniques are applied, and that recommendations for design changes in assets are communicated to achieve inspection optimisation.
- ✔ Reduce mechanical/scaffold/crane costs and resources.
- ✔ Reduce risk in the operation phase of the plant's life cycle.
- ✔ Reduce sim-ops clashes.
- ✔ Select the best access points to enable the inspection to be completed with integrity.
- ✔ Reduce number of staff/personnel on site and subsequent logistics.
- ✔ Increase the number of repeatable comparable inspections for future degradation analysis.
- ✔ Reduce shutdown time frame and cost.
- ✔ Increase integrity data capture to support process and operations.
- ✔ Future-proof access requirements to enable online inspections, hydrocarbon enriched inspections and the application of remote NDT techniques.
- ✔ Reduce Confined Space Entries (CSEs) and Intrusive access requirements.
- ✔ Reduce safety risk profiles and high risk activities.
- ✔ Increase confidence in forward maintenance planning and risk assessment.
- ✔ Increase inspection coverage to build confidence in operating the plant.
- ✔ Increase data availability for your Asset Integrity Management (AIM) assessments.
- ✔ Increase alignment and integration with other NII techniques for qualitative inspection results.

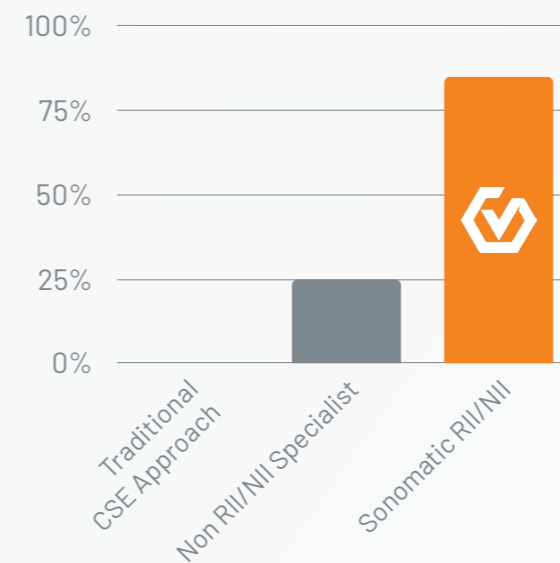
Throughout our history of executing this type of specialist work, we have seen a number of non-RII specialists attempt this, achieving limited success. This is not an issue for our team, as we have the experience, insights, and knowledge gained from many dedicated projects.

On top of this, each of our technicians have a true passion for what they do and a natural desire to achieve great results. Our team carries a sense of pride in being able to provide our clients with higher levels of coverage so they can have the confidence to operate their plant safely.

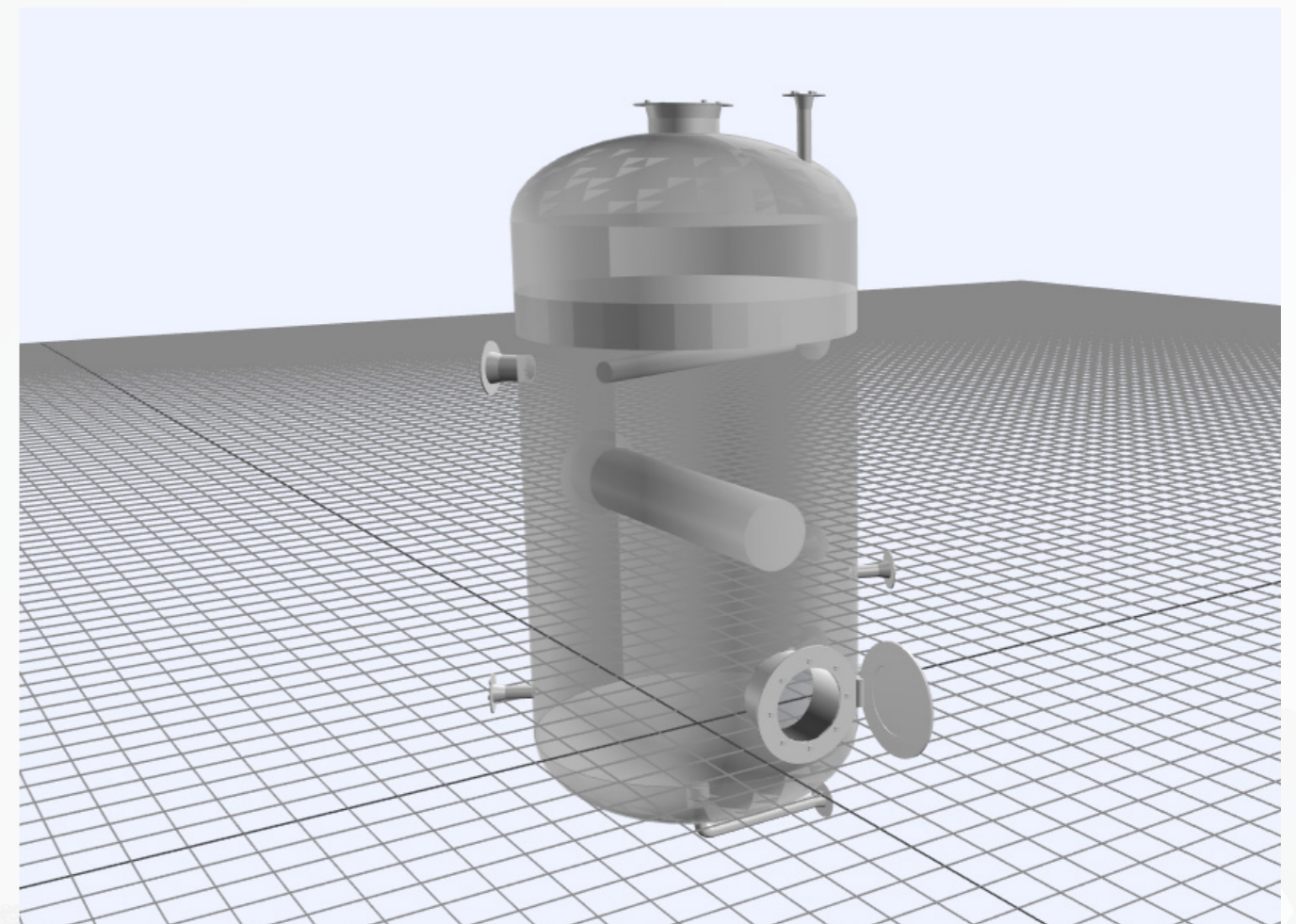
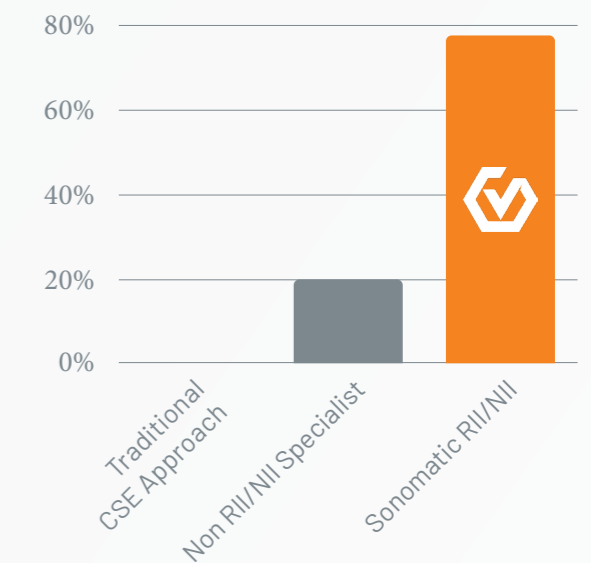


BENEFITS OF FEED RII AND NII

POTENTIAL REDUCTIONS IN S/D TIMES



POTENTIAL REDUCTIONS IN S/D COSTS



KEY CONTACTS

SONOMATIC

Sean Peters

Project Manager - Europe and Africa

T: +44 (0) 1925 414 000 | M: +44 (0) 7386 807 346

E: Sean.Peters@sonomatic.com

Alex Cesan

General Manager - Australia and NZ

T: +61 498 442 666

E: Alex.Cesan@sonomatic.com.au

Zach McCann

Region Manager - South East Asia

T: +60 361 581 185 /1180

M: +60 12 555 1569 / +61 404 797 670

E: Zach.Mccann@sonomatic.com.my

Charles Loader

General Manager - Europe and Africa

T: +44 (0) 1925 414000 | M: +44 (0) 7376 714765

E: Charles.Loader@sonomatic.com

Esteban Cesan

President - Americas

T: +1 832 977 0303

E: Esteban.Cesan@sonomatic.com

Clayton Webb

Regional Manager - Middle East, Caspian & Black Sea

T: +9712 6580708 | M: +971 50 313 9254

E: Clayton.Webb@sonomatic.com

AUAV

James Rennie

Managing Director

T: +61 1300 738 521 | M: +61 497 070 576

E: James.Rennie@auav.com.au

Jamie Holyoak

General Manager

T: +61 1300 738 521 | M: +61 473 136 614

E: Jamie.Holyoak@auav.com.au

Barry Nixon

Operations Manager - UK

T: +44 (0) 1224 823960

E: Barry.Nixon@auav.co.uk

Luke Campbell

Operations Manager - Western Australia

T: +61 1300 738 521 | M: +61 467 677 886

E: Luke.Campbell@auav.com.au



www.sonomatic.com