

# DATA SHEET

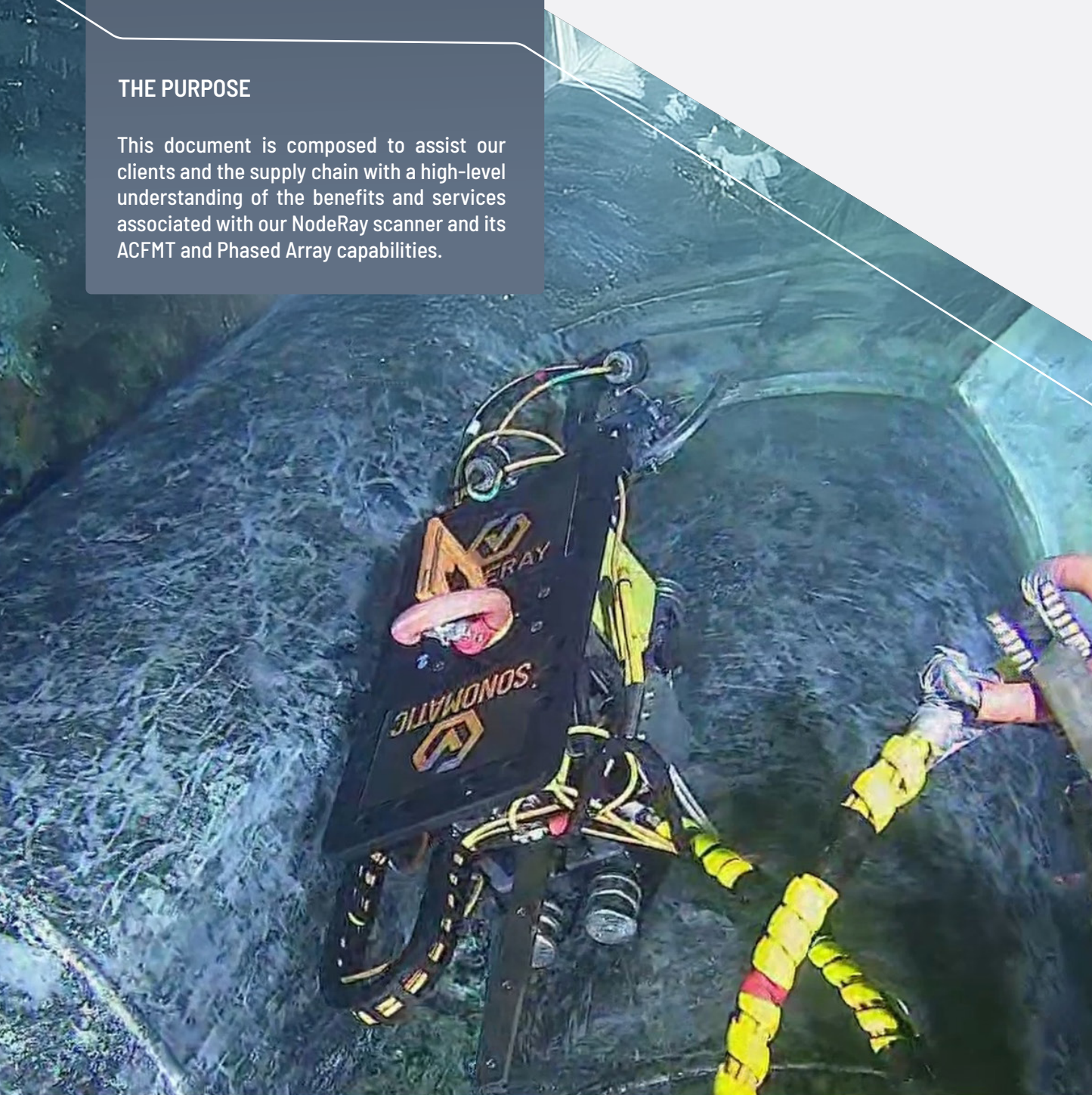
## NODERAY SCANNER CAPABLE OF ACFMT & PA

### THE PURPOSE

This document is composed to assist our clients and the supply chain with a high-level understanding of the benefits and services associated with our NodeRay scanner and its ACFMT and Phased Array capabilities.



# SONOMATIC





# NODERAY SCANNER

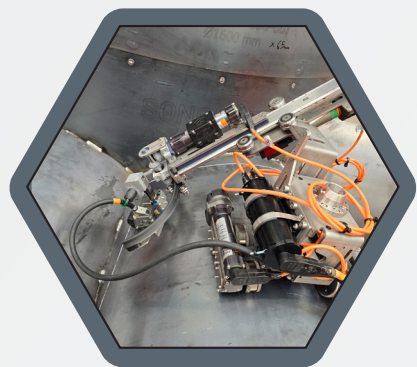
## OVERVIEW

Sonomatic proudly introduces the NodeRay Scanner, an innovative solution for the inspection of complex subsea nodes and infrastructure. The system integrates Alternating Current Field Measurement Technique (ACFMT) with Phased Array ultrasonics, including Total Focusing Method (TFM) and Phase Coherent Imaging (PCI).

The NodeRay delivers reliable surface-breaking crack detection and full volumetric weld inspections.



## KEY FEATURES

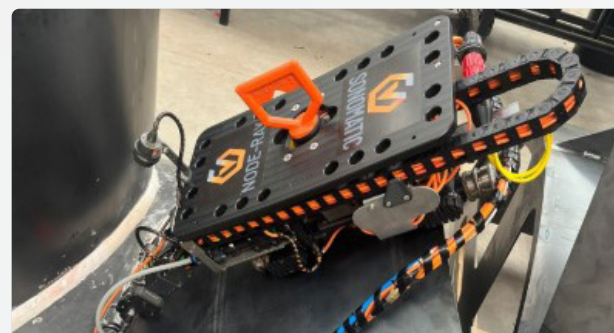


The NodeRay Scanner is designed to overcome the limitations of traditional inspection methods. Using bespoke software its articulating multi-function head allows precise automated tracking of intricate node geometries, ensuring consistent probe positioning and skew throughout the inspection process.

The adaptive crawler platform accommodates a wide range of diameters and configurations, eliminating the need for multiple scanners and reducing operational complexity and time. Together, these features provide high accuracy, repeatability and reliability for inspecting irregular surfaces and complex weld geometries.

## CLIENT BENEFITS

- ✔ **Comprehensive Coverage:** Surface and volumetric inspection in a single deployment.
- ✔ **Efficiency:** Rapid scanning reduces operational downtime.
- ✔ **Versatility:** Adaptable to varied node sizes and configurations.
- ✔ **Integrity Assurance:** Proven technology for critical subsea infrastructure.

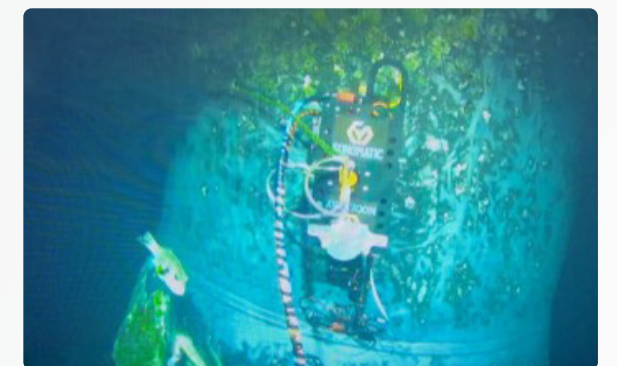
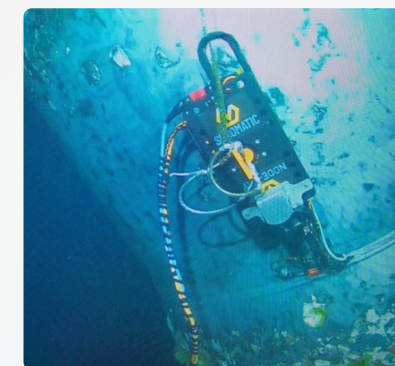


## CASE STUDY: FIRST-EVER PHASED ARRAY & ACFMT DEPLOYMENT ON SUBSEA NODES

Sonomatic successfully completed the first-ever full metric subsea node inspection using Phased Array combined with ACFMT. This project addressed a long-standing industry challenge—accurate inspection of complex weld geometries in subsea environments.

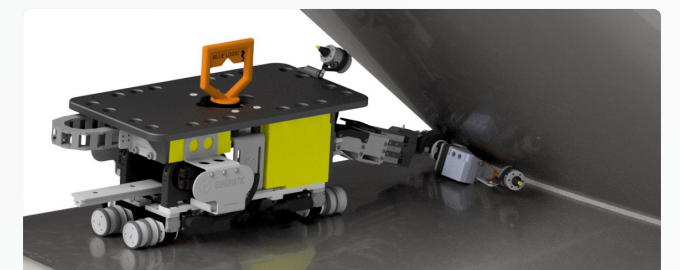
### Highlights of the Deployment

- ✔ **Custom Adaptation of proprietary Stingray Scanner:** Enhanced for node tracking and complex geometry scanning.
- ✔ **Articulating Multi-Function Head:** Maintained optimal probe positioning throughout inspection.
- ✔ **Rapid Development:** All techniques fully validated and qualified on representative test pieces.
- ✔ **Validation:** Successful full inspection system validations and operator FAT.
- ✔ **Outcome:** Reliable detection of surface-breaking cracks and volumetric weld coverage, setting a new benchmark for offshore asset integrity.



## WHY CHOOSE SONOMATIC

Sonomatic is committed to solving complex subsea challenges through innovation. Our first-to-market approach ensures clients benefit from industry-leading technology tailored to offshore asset integrity requirements. With in-house mechanical and electronic design expertise, we provide solutions that combine engineering excellence with practical application in the field.



## QA AND HS&E

Sonomatic operate under an integrated QHSE management system and are committed to the highest quality and safety of service provision | ISO 9001:2015: 00007140 | ISO 14001: 2015:00037371 | ISO 45001: 2018:00037372 | ISO 17020:2012: 4276 | Achilles FPAL Verified: 076712 | SEQual 1988 | British Safety Council Member: S0388440 |



# KEY CONTACTS

## EUROPE AND AFRICA

**Graham Marshall**  
Subsea Project Manager  
T: +44 (0) 1224 823 960  
E: [Graham.Marshall@sonomatic.com](mailto:Graham.Marshall@sonomatic.com)

**Sean Peters**  
Project Manager  
T: +44 (0) 1925 414 000 | M: +44 (0) 7386 807 346  
E: [Sean.Peters@sonomatic.com](mailto:Sean.Peters@sonomatic.com)

**Charles Loader**  
General Manager  
T: +44 (0) 1925 414 000 | M: +44 (0) 7376 714 765  
E: [Charles.Loader@sonomatic.com](mailto:Charles.Loader@sonomatic.com)

## AMERICAS

**Esteban Cesan**  
President  
T: +1 832 977 0303  
E: [Esteban.Cesan@sonomatic.com](mailto:Esteban.Cesan@sonomatic.com)

**Agata Surowiec**  
Vice President - Business Development  
T: +1 832 316 9925  
E: [Agata.Surowiec@sonomatic.com](mailto:Agata.Surowiec@sonomatic.com)

**Gideon Vany Zyl**  
Operations Manager  
T: + (346) 498 2892  
E: [Gideon.VanZyl@sonomatic.com](mailto:Gideon.VanZyl@sonomatic.com)

## AUSTRALASIA

**Jonathan Millen**  
Operations Manager - Australia  
T: +61 477 030 058  
E: [Jon.Millen@sonomatic.com.au](mailto:Jon.Millen@sonomatic.com.au)

**Alex Cesan**  
General Manager - Australia & NZ  
T: +61 498 442 666  
E: [Alex.Cesan@sonomatic.com.au](mailto:Alex.Cesan@sonomatic.com.au)

**Zach McCann**  
Region Manager - South East Asia  
T: +60 361 581 185 / 1180  
M: +60 12 555 1569 / +61 404 797 670  
E: [Zach.Mccann@sonomatic.com.my](mailto:Zach.Mccann@sonomatic.com.my)

## MIDDLE EAST

**Clayton Webb**  
Regional Manager  
T: +971 26 580 708  
E: [Clayton.Webb@sonomatic.com](mailto:Clayton.Webb@sonomatic.com)



[www.sonomatic.com](http://www.sonomatic.com)