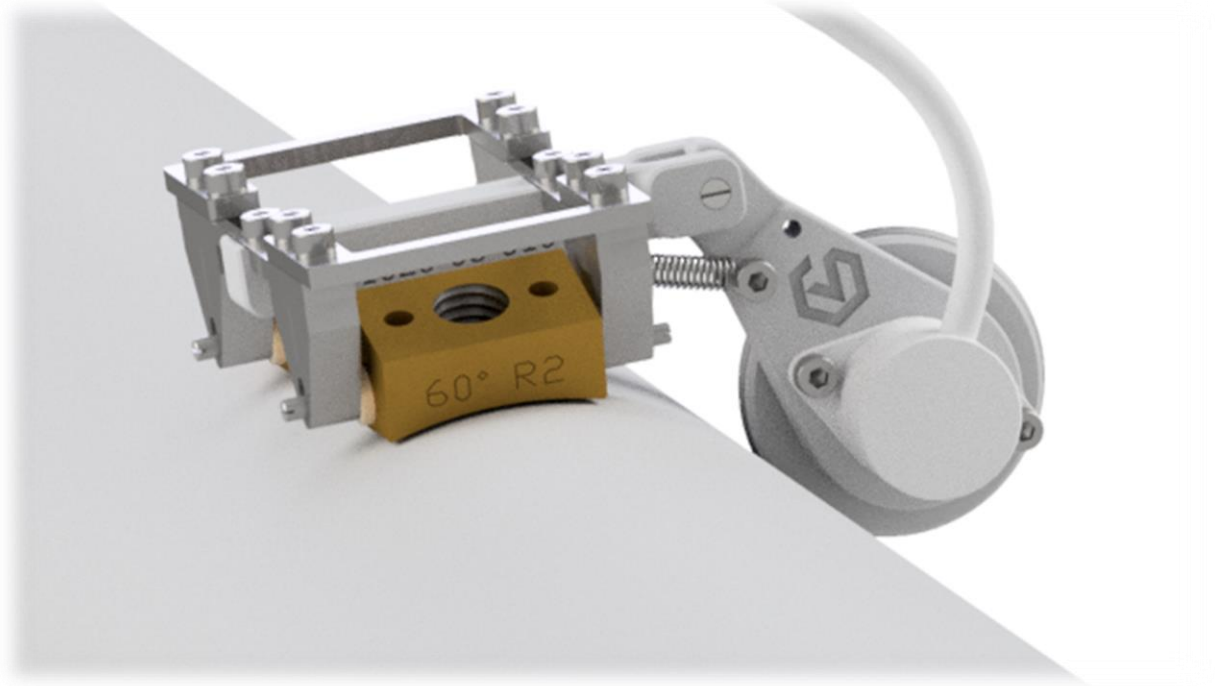


WRE H-Frame



- **Weight:** 0.4 kg
- **Dims:** 50mm x 100mm x 70mm (H, W, L)
- **Depth Rating:** Topside (subsea available)
- **Operating Temperature:** -10°C to +55°C
- **Max OD:** flat
- **Min OD:** 2"
- **Positioning:** y-axis encoded
- **Scan Speed:** 15mm/sec (Typ. No Y-Axis travel limit)
- **Measurement Configurable for:**
 - ToFD line scan
 - B-Scan
 - PE Shear Wave
- **Data Communication:** 100MBit Ethernet over STP (copper) cable
- **μ+ Power Supply:** Battery/110V/240V
- **Attachment Method:** Handheld
- **Additional Options:** Subsea, magnetic wheel attachment

General Features

- Manual control to accommodate difficult geometry
- Gimbaling wedges ensures good data collection on undulating surfaces
- Rugged and compact design for tight access areas
- Radiused wedges for different pipe diameters, ensuring good contact
- Live data collection
- Lightweight
- Y-axis encoded
- Magnetic wheel attachment available for stability
- Chain attachment for securing on coated pipes
- Configurable for topside and subsea use

Dimensions

